

Anti-CTH Polyclonal Antibody

Cat: K109504P

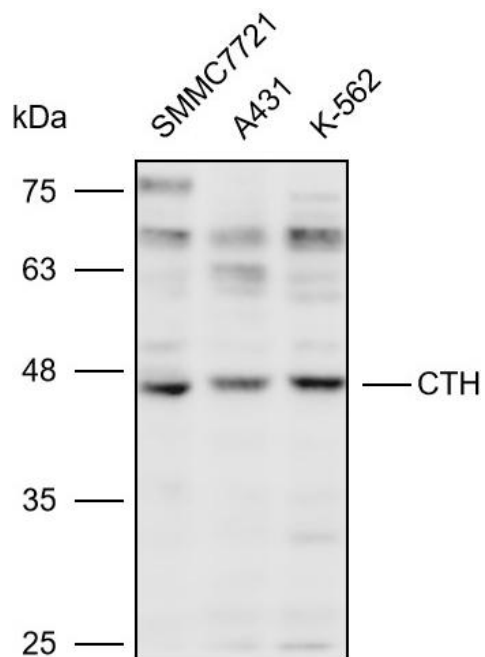
Summary:

| | |
|---|---|
| 【Product name】 : Anti-CTH antibody | 【Source】 : Rabbit |
| 【Isotype】 : IgG | 【Species reactivity】 : Human Mouse |
| 【Swiss Prot】 : P32929 | 【Gene ID】 : 1491 |
| 【Calculated】 : MW:40/41/45kDa | 【Observed】 : MW:45kDa |
| 【Purification】 : Affinity purification | |
| 【Tested applications】 : WB | |
| 【Recommended dilution】 : WB 1:1000-3000. | |
| 【WB Positive sample】 : SMMC7721,A431,K-562 | |
| 【Subcellular location】 : Cytoplasm | |
| 【Immunogen】 : Recombinant protein of human CTH | |
| 【Storage】 : Shipped at 4°C. Upon delivery aliquot and store at -20°C | |

Background:

This gene encodes a cytoplasmic enzyme in the trans-sulfuration pathway that converts cystathione derived from methionine into cysteine. Glutathione synthesis in the liver is dependent upon the availability of cysteine. Mutations in this gene cause cystathioninuria. Alternative splicing of this gene results in three transcript variants encoding different isoforms.

Verified picture



Western blot analysis with CTH antibody diluted at 1:2000; Lane: SMMC7721, A431, K-562