

Anti-SUB1 Polyclonal Antibody

Cat: K109455P

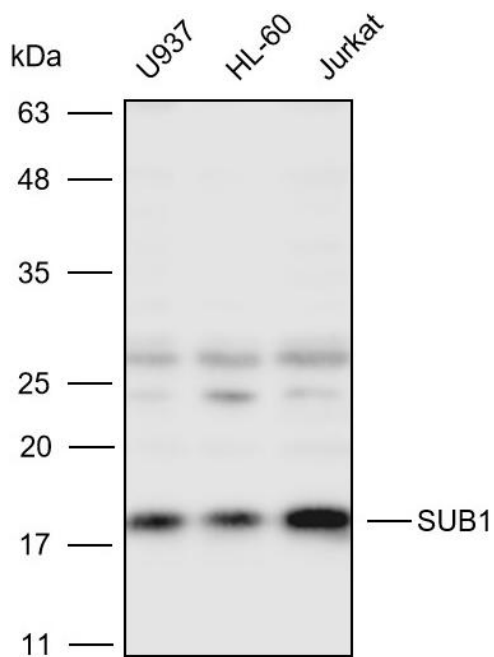
Summary:

【Product name】 : Anti-SUB1 antibody	【Source】 : Rabbit
【Isotype】 : IgG	【Species reactivity】 : Human Mouse Rat
【Swiss Prot】 : P53999	【Gene ID】 : 10923
【Calculated】 : MW:14kDa	【Observed】 : MW:18kDa
【Purification】 : Affinity purification	
【Tested applications】 : WB	
【Recommended dilution】 : WB 1:1000-3000.	
【WB Positive sample】 : U937,HL-60,Jurkat	
【Subcellular location】 : Nucleus	
【Immunogen】 : A synthetic peptide of Human SUB1	
【Storage】 : Shipped at 4°C. Upon delivery aliquot and store at -20°C	

Background:

General coactivator that functions cooperatively with TAFs and mediates functional interactions between upstream activators and the general transcriptional machinery. May be involved in stabilizing the multiprotein transcription complex. Binds single-stranded DNA. Also binds, in vitro, non-specifically to double-stranded DNA (ds DNA).

Verified picture



Western blot analysis with SUB1 antibody diluted at 1:2000; Lane: U937, HL-60, Jurkat