

Anti-CLK1 Polyclonal Antibody

Cat: K109409P

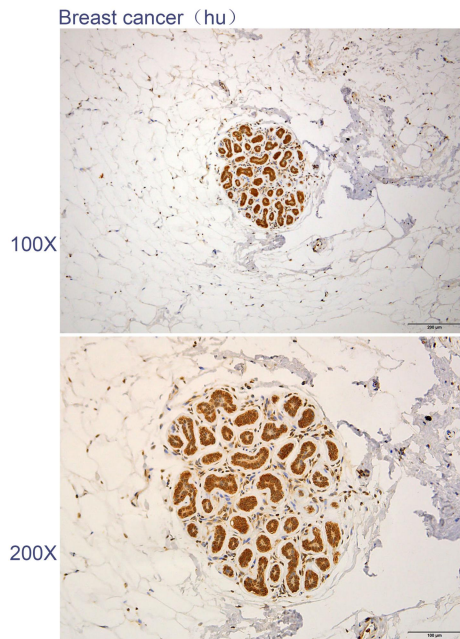
Summary:

- 【Product name】** : Anti-CLK1 antibody **【Source】** : Rabbit
- 【Isotype】** : IgG **【Species reactivity】** : Human Mouse
- 【Swiss Prot】** : P49759 **【Gene ID】** : 1195
- 【Calculated】** : MW:17/57/62kDa
- 【Purification】** : Octanoic acid-ammonium sulfate precipitation
- 【Tested applications】** : IHC
- 【Recommended dilution】** : IHC 1:50-200.
- 【IHC Positive sample】** : Human breast cancer
- 【Subcellular location】** : Cytoplasm Nucleus
- 【Immunogen】** : A synthetic peptide of human CLK1
- 【Storage】** : Shipped at 4°C. Upon delivery aliquot and store at -20°C

Background:

Dual specificity kinase acting on both serine/threonine and tyrosine-containing substrates. Phosphorylates serine- and arginine-rich (SR) proteins of the spliceosomal complex and may be a constituent of a network of regulatory mechanisms that enable SR proteins to control RNA splicing. Phosphorylates: SRSF1, SRSF3 and PTPN1. Regulates the alternative splicing of tissue factor (F3) pre-mRNA in endothelial cells and adenovirus E1A pre-mRNA.

Verified picture



Immunohistochemistry of paraffin-embedded
Human breast cancer with CLK1 antibody
diluted at 1:100