

Anti-UBR1 Polyclonal Antibody

Cat: K109222P

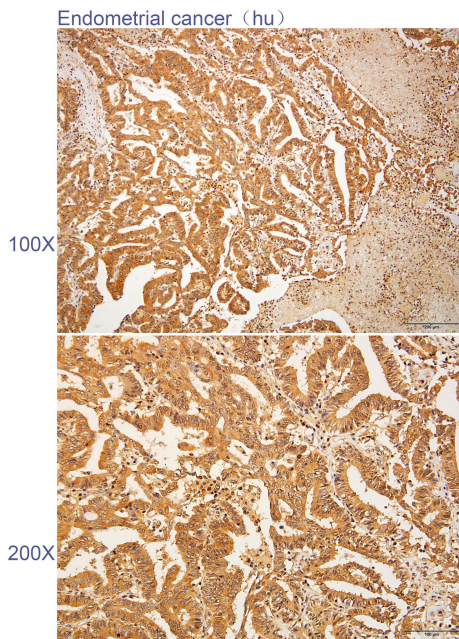
Summary:

| | |
|---|---|
| 【Product name】 : Anti-UBR1 antibody | 【Source】 : Rabbit |
| 【Isotype】 : IgG | 【Species reactivity】 : Human Mouse |
| 【Swiss Prot】 : Q8I WV7 | 【Gene ID】 : 197131 |
| 【Calculated】 : MW:93/200kDa | |
| 【Purification】 : Affinity purification | |
| 【Tested applications】 : IHC | |
| 【Recommended dilution】 : IHC 1:25-100. | |
| 【IHC Positive sample】 : Human endometrial cancer | |
| 【Subcellular location】 : Cytoplasm | |
| 【Immunogen】 : A synthetic peptide of human UBR1 | |
| 【Storage】 : Shipped at 4°C. Upon delivery aliquot and store at -20°C | |

Background:

E3 ubiquitin-protein ligase which is a component of the N-end rule pathway. Recognizes and binds to proteins bearing specific N-terminal residues that are destabilizing according to the N-end rule, leading to their ubiquitination and subsequent degradation. May be involved in pancreatic homeostasis. Binds leucine and is a negative regulator of the leucine-mTOR signaling pathway, thereby controlling cell growth.

Verified picture



Immunohistochemistry of paraffin-embedded
Human endometrial cancer with UBR1
antibody diluted at 1:40