

Anti-EFNB1/2/3 Polyclonal Antibody

Cat: K109221P

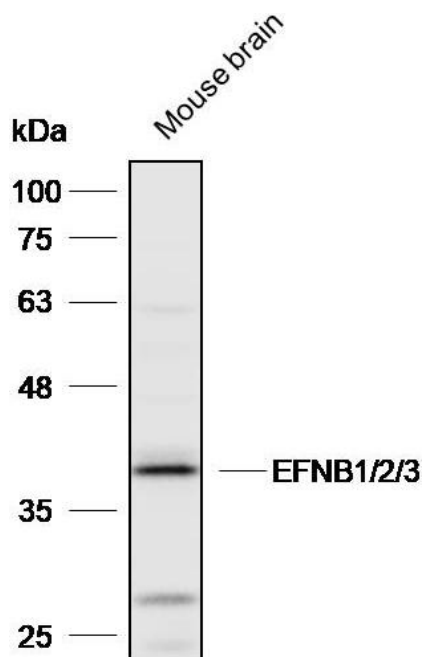
Summary:

【Product name】 : Anti-EFNB1/2/3 antibody	【Source】 : Rabbit
【Isotype】 : IgG	【Species reactivity】 : Human Mouse Rat
【Swiss Prot】 : P98172/P52799/Q15768	【Gene ID】 : 1947/1948/1949
【Calculated】 : MW:36/37/38kDa	【Observed】 : MW:39kDa
【Purification】 : Affinity purification	
【Tested applications】 : WB	
【Recommended dilution】 : WB 1:1000-3000.	
【WB Positive sample】 : Mouse brain	
【Subcellular location】 : Cytoplasm	
【Immunogen】 : A synthetic peptide of human EFNB1/2/3	
【Storage】 : Shipped at 4°C. Upon delivery aliquot and store at -20°C	

Background:

Cell surface transmembrane ligand for Eph receptors, a family of receptor tyrosine kinases which are crucial for migration, repulsion and adhesion during neuronal, vascular and epithelial development. Binding to Eph receptors residing on adjacent cells leads to contact-dependent bidirectional signaling into neighboring cells. Shows high affinity for the receptor tyrosine kinase EPHB1/ELK. Can also bind EPHB2 and EPHB3. Binds to, and induces collapse of, commissural axons/growth cones in vitro. May play a role in constraining the orientation of longitudinally projecting axons.

Verified picture



Western blot analysis with EFNB1/2/3 antibody
diluted at 1:2000; Lane: Mouse brain