

## Anti-HPX Polyclonal Antibody

Cat: K109218P

### Summary:

---

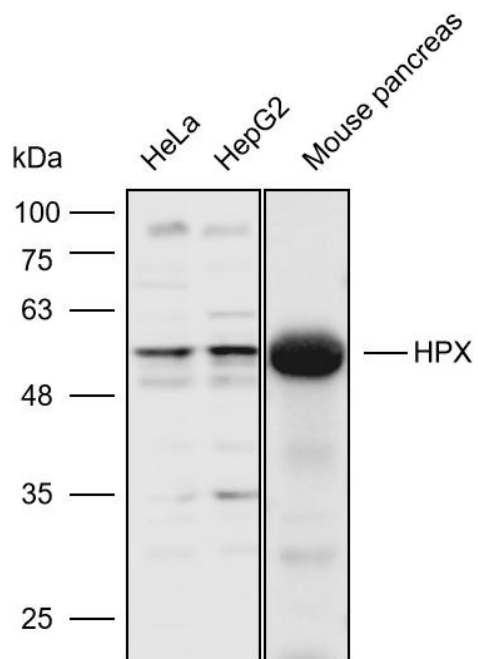
<b>【Product name】</b> : Anti-HPX antibody	<b>【Source】</b> : Rabbit
<b>【Isotype】</b> : IgG	<b>【Species reactivity】</b> : Human Mouse
<b>【Swiss Prot】</b> : P02790	<b>【Gene ID】</b> : 3263
<b>【Calculated】</b> : MW:52kDa	<b>【Observed】</b> : MW:55kDa
<b>【Purification】</b> : Affinity purification	
<b>【Tested applications】</b> : WB	
<b>【Recommended dilution】</b> : WB 1:1000-3000.	
<b>【WB Positive sample】</b> : Hela,HepG2,Mouse pancreas	
<b>【Subcellular location】</b> : Secreted	
<b>【Immunogen】</b> : A synthetic peptide of human HPX	
<b>【Storage】</b> : Shipped at 4°C. Upon delivery aliquot and store at -20°C	

### Background:

---

Binds heme and transports it to the liver for breakdown and iron recovery, after which the free hemopexin returns to the circulation.

## Verified picture



Western blot analysis with HPX antibody diluted at 1:2000; Lane: HeLa, HepG2, Mouse pancreas