

Anti-ALG2 Polyclonal Antibody

Cat: K109082P

Summary:

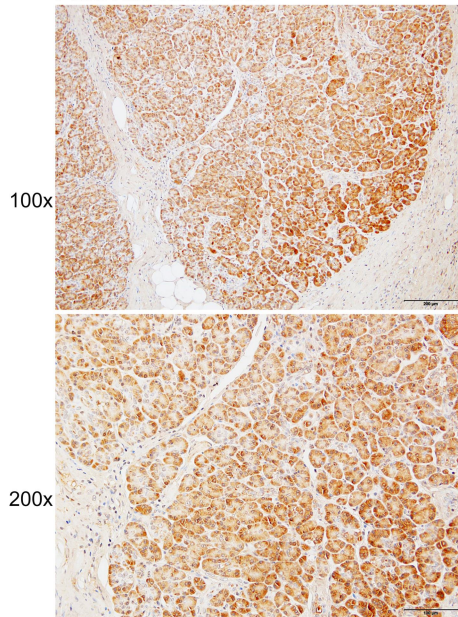
【Product name】 : Anti-ALG2 antibody	【Source】 : Rabbit
【Isotype】 : IgG	【Species reactivity】 : Human Mouse Rat
【Swiss Prot】 : Q9H553	【Gene ID】 : 85365
【Calculated】 : MW:47kDa	
【Purification】 : Affinity purification	
【Tested applications】 : IHC	
【Recommended dilution】 : IHC 1:50-200.	
【IHC Positive sample】 : Human pancreatic cancer	
【Subcellular location】 : Cytoplasm	
【Immunogen】 : Recombinant protein of human ALG2	
【Storage】 : Shipped at 4°C. Upon delivery aliquot and store at -20°C	

Background:

This gene encodes a member of the glycosyltransferase 1 family. The encoded protein acts as an alpha 1,3 mannosyltransferase, mannosylating Man(2)GlcNAc(2)-dolichol diphosphate and Man(1)GlcNAc(2)-dolichol diphosphate to form Man(3)GlcNAc(2)-dolichol diphosphate. Defects in this gene have been associated with congenital disorder of glycosylation type 1h (CDG-1h). Alternative splicing results in multiple transcript variants.

Verified picture

Pancreatic cancer (hu)



Immunohistochemistry of paraffin-embedded
Human pancreatic cancer with ALG2 antibody
diluted at 1:100