

Anti-MRPL9 Polyclonal Antibody

Cat: K109061P

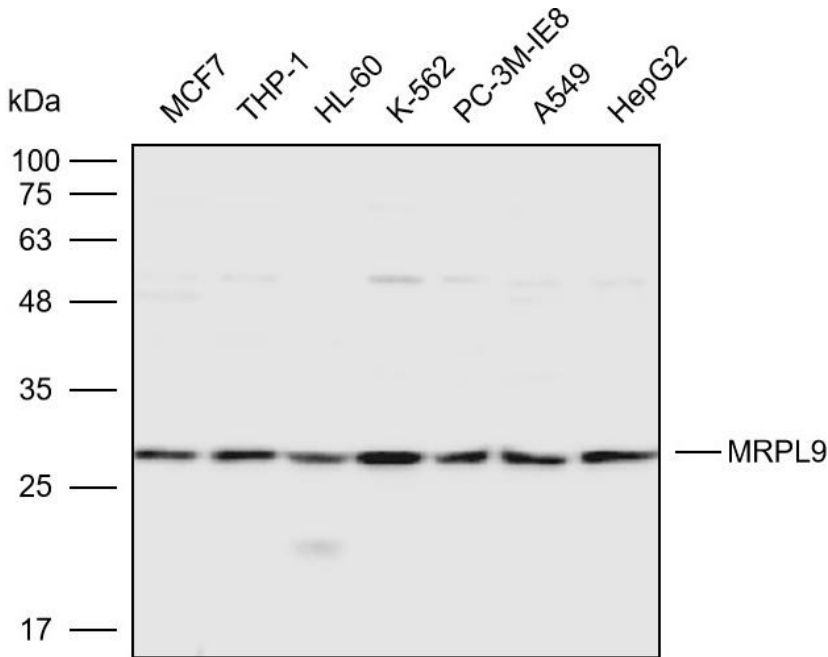
Summary:

【Product name】 : Anti-MRPL9 antibody	【Source】 : Rabbit
【Isotype】 : IgG	【Species reactivity】 : Human Mouse Rat
【Swiss Prot】 : Q9BYD2	【Gene ID】 : 65005
【Calculated】 : MW:30kDa	【Observed】 : MW:30kDa
【Purification】 : Affinity purification	
【Tested applications】 : WB IHC	
【Recommended dilution】 : WB 1:1000-3000. IHC 1:50-200.	
【WB Positive sample】 : MCF7,THP-1,HL-60,K-562,PC-3M-IE8,A549,HepG2	
【IHC Positive sample】 : Human liver cancer	
【Subcellular location】 : Cytoplasm	
【Immunogen】 : Recombinant protein of human MRPL9	
【Storage】 : Shipped at 4°C. Upon delivery aliquot and store at -20°C	

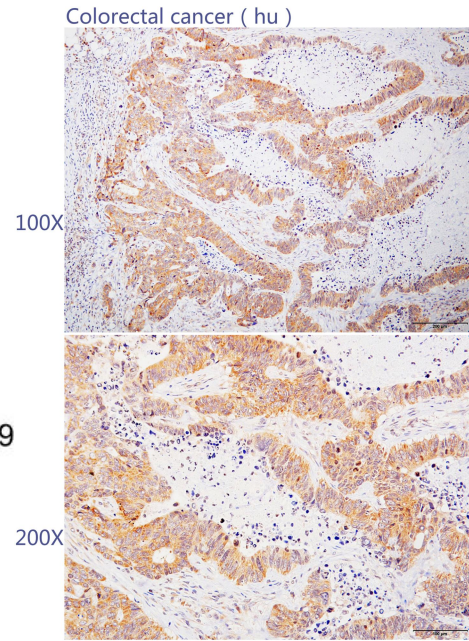
Background:

This is a nuclear gene encoding a protein component of the 39S subunit of the mitochondrial ribosome. Alternative splicing results in multiple transcript variants. A pseudogene of this gene is found on chromosome 8.

Verified picture



Western blot analysis with MRPL9 antibody diluted at 1:2000; Lane: MCF7, THP-1, HL-60, K-562, PC-3M-IE8, A549, HepG2



Immunohistochemistry of paraffin-embedded Human colorectal cancer with MRPL9 antibody diluted at 1:100