

Anti-MRPL42 Polyclonal Antibody

Cat: K109060P

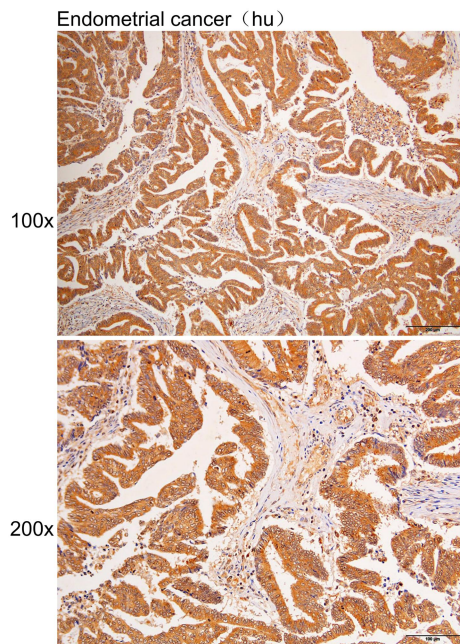
Summary:

【Product name】 : Anti-MRPL42 antibody	【Source】 : Rabbit
【Isotype】 : IgG	【Species reactivity】 : Human Mouse Rat
【Swiss Prot】 : Q9Y6G3	【Gene ID】 : 28977
【Calculated】 : MW:17kDa	
【Purification】 : Affinity purification	
【Tested applications】 : IHC	
【Recommended dilution】 : IHC 1:25-100.	
【IHC Positive sample】 : Human endometrial cancer	
【Subcellular location】 : Cytoplasm	
【Immunogen】 : Recombinant protein of human MRPL42	
【Storage】 : Shipped at 4°C. Upon delivery aliquot and store at -20°C	

Background:

Mammalian mitochondrial ribosomal proteins are encoded by nuclear genes and help in protein synthesis within the mitochondrion. Mitochondrial ribosomes (mitoribosomes) consist of a small 28S subunit and a large 39S subunit. They have an estimated 75% protein to rRNA composition compared to prokaryotic ribosomes, where this ratio is reversed. Another difference between mammalian mitoribosomes and prokaryotic ribosomes is that the latter contain a 5S rRNA. Among different species, the proteins comprising the mitoribosome differ greatly in sequence, and sometimes in biochemical properties, which prevents easy recognition by sequence homology. This gene encodes a protein identified as belonging to both the 28S and the 39S subunits. Alternative splicing results in multiple transcript variants. Pseudogenes corresponding to this gene are found on chromosomes 4q, 6p, 6q, 7p, and 15q.

Verified picture



Immunohistochemistry of paraffin-embedded
Human endometrial cancer with MRPL42
antibody diluted at 1:40