

## Anti-PSME1 Polyclonal Antibody

Cat: K109059P

### Summary:

---

**【Product name】** : Anti-PSME1 antibody

**【Source】** : Rabbit

**【Isotype】** : IgG

**【Species reactivity】** : Human Mouse Rat

**【Swiss Prot】** : Q06323

**【Gene ID】** : 5720

**【Calculated】** : MW:27/29kDa

**【Observed】** : MW:29kDa

**【Purification】** : Affinity purification

**【Tested applications】** : WB

**【Recommended dilution】** : WB 1:1000-3000.

**【WB Positive sample】** : MCF7,Hela,Neuro-2a,Mouse spleen,Mouse lung,Mouse heart,Mouse thymus

**【Subcellular location】** : Cytoplasm

**【Immunogen】** : Recombinant protein of human PSME1

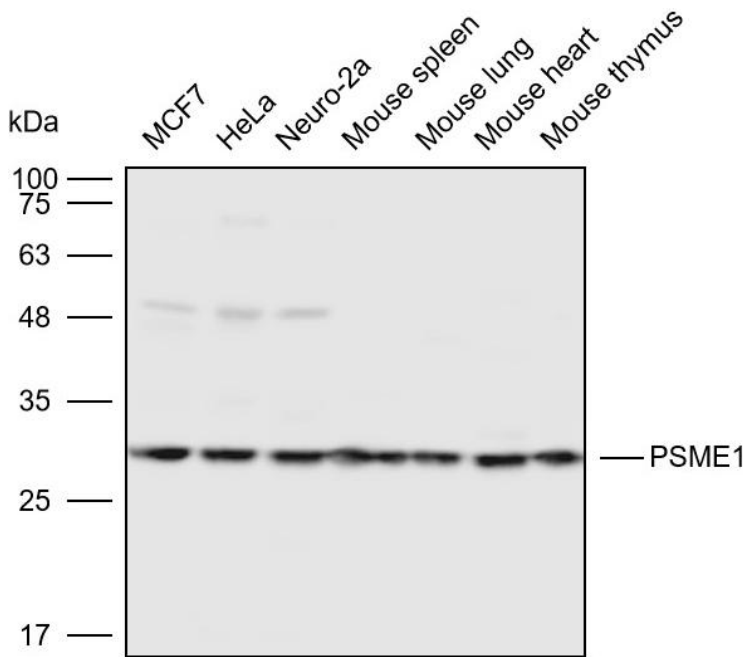
**【Storage】** : Shipped at 4°C. Upon delivery aliquot and store at -20°C

### Background:

---

Implicated in immunoproteasome assembly and required for efficient antigen processing. The PA28 activator complex enhances the generation of class I binding peptides by altering the cleavage pattern of the proteasome.

## Verified picture



Western blot analysis with PSME1 antibody diluted at 1:2000;  
Lane: MCF7, HeLa, Neuro-2a, Mouse spleen, Mouse lung, Mouse heart, Mouse thymus