

Anti-MEPCE Polyclonal Antibody

Cat: K109056P

Summary:

【Product name】 : Anti-MEPCE antibody

【Source】 : Rabbit

【Isotype】 : IgG

【Species reactivity】 : Human Mouse Rat

【Swiss Prot】 : Q7L2J0

【Gene ID】 : 56257

【Calculated】 : MW:25/74kDa

【Purification】 : Affinity purification

【Tested applications】 : IHC

【Recommended dilution】 : IHC 1:100-300.

【IHC Positive sample】 : Human skin cancer

【Subcellular location】 : Nucleus

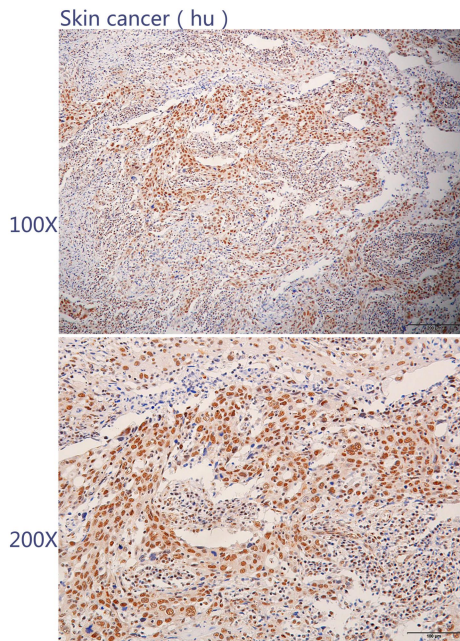
【Immunogen】 : Recombinant protein of human MEPCE

【Storage】 : Shipped at 4°C. Upon delivery aliquot and store at -20°C

Background:

S-adenosyl-L-methionine-dependent methyltransferase that adds a methylphosphate cap at the 5'-end of 7SK snRNA, leading to stabilize it.

Verified picture



Immunohistochemistry of paraffin-embedded
Human skin cancer with MEPCE antibody
diluted at 1:200