

Anti-MYEF2 Polyclonal Antibody

Cat: K109053P

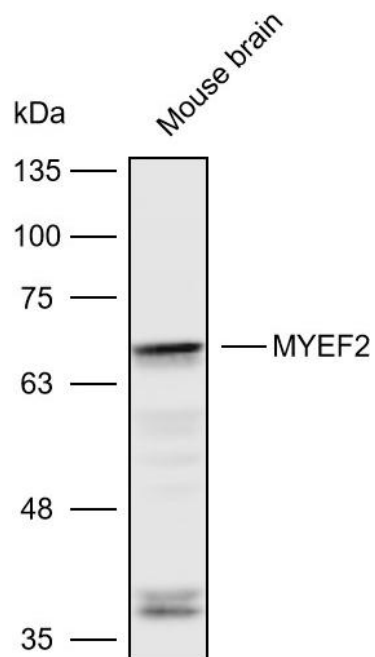
Summary:

【Product name】 : Anti-MYEF2 antibody	【Source】 : Rabbit
【Isotype】 : IgG	【Species reactivity】 : Human Mouse Rat
【Swiss Prot】 : Q9P2K5	【Gene ID】 : 50804
【Calculated】 : MW:14/20/62/64kDa	【Observed】 : MW:67kDa
【Purification】 : Affinity purification	
【Tested applications】 : WB IHC	
【Recommended dilution】 : WB 1:1000-3000. IHC 1:50-200.	
【WB Positive sample】 : Mouse brain	
【IHC Positive sample】 : Human thyroid cancer	
【Subcellular location】 : Nucleus	
【Immunogen】 : Recombinant protein of human MYEF2	
【Storage】 : Shipped at 4°C. Upon delivery aliquot and store at -20°C	

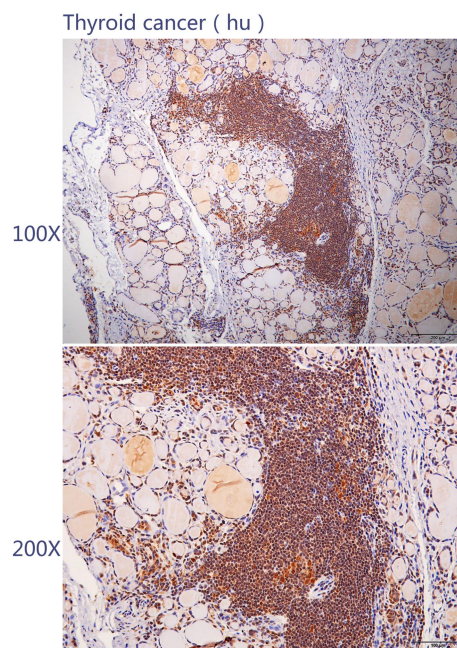
Background:

Transcriptional repressor of the myelin basic protein gene (MBP). Binds to the proximal MB1 element 5'-TTGTCC-3' of the MBP promoter. Its binding to MB1 and function are inhibited by PURA.

Verified picture



Western blot analysis with MYEF2 antibody diluted at 1:2000; Lane: Mouse brain



Immunohistochemistry of paraffin-embedded Human thyroid cancer with MYEF2 antibody diluted at 1:100