

Anti-CBX2 Polyclonal Antibody

Cat: K109029P

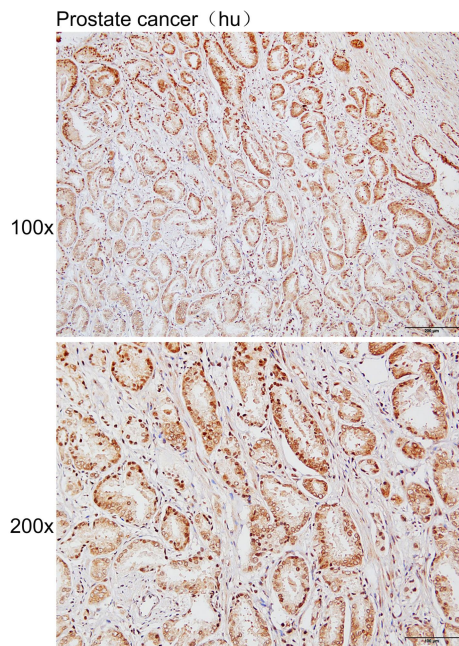
Summary:

【Product name】 : Anti-CBX2 antibody	【Source】 : Rabbit
【Isotype】 : IgG	【Species reactivity】 : Human Mouse Rat
【Swiss Prot】 : Q14781	【Gene ID】 : 84733
【Calculated】 : MW:23/56kDa	
【Purification】 : Affinity purification	
【Tested applications】 : IHC	
【Recommended dilution】 : IHC 1:100-300.	
【IHC Positive sample】 : Human prostate cancer	
【Subcellular location】 : Nucleus	
【Immunogen】 : Recombinant protein of human CBX2	
【Storage】 : Shipped at 4°C. Upon delivery aliquot and store at -20°C	

Background:

Component of a Polycomb group (PcG) multiprotein PRC1-like complex, a complex class required to maintain the transcriptionally repressive state of many genes, including Hox genes, throughout development. PcG PRC1 complex acts via chromatin remodeling and modification of histones; it mediates monoubiquitination of histone H2A 'Lys-119', rendering chromatin heritably changed in its expressibility. Binds to histone H3 trimethylated at 'Lys-9' (H3K9me3) or at 'Lys-27' (H3K27me3). Plays a role in the lineage differentiation of the germ layers in embryonic development. Involved in sexual development, acting as activator of NR5A1 expression.

Verified picture



Immunohistochemistry of paraffin-embedded
Human prostate cancer with CBX2 antibody
diluted at 1:200