

Anti-CC2D1B Polyclonal Antibody

Cat: K109025P

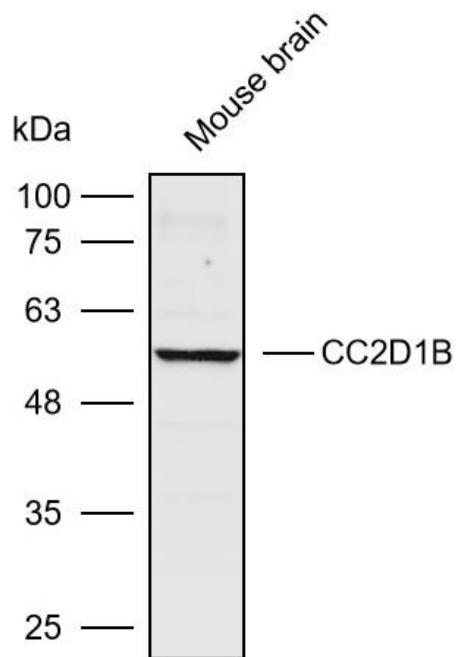
Summary:

【Product name】 : Anti-CC2D1B antibody	【Source】 : Rabbit
【Isotype】 : IgG	【Species reactivity】 : Human Mouse Rat
【Swiss Prot】 : Q5T0F9	【Gene ID】 : 200014
【Calculated】 : MW:13/25/59/94kDa	【Observed】 : MW:56kDa
【Purification】 : Affinity purification	
【Tested applications】 : WB	
【Recommended dilution】 : WB 1:1000-3000.	
【WB Positive sample】 : Mouse brain	
【Subcellular location】 : Nucleus	
【Immunogen】 : Recombinant protein of human CC2D1B	
【Storage】 : Shipped at 4°C. Upon delivery aliquot and store at -20°C	

Background:

Transcription factor that binds specifically to the DRE (dual repressor element) and represses HTR1A gene transcription in neuronal cells.

Verified picture



Western blot analysis with CC2D1B antibody
diluted at 1:2000; Lane: Mouse brain