

Anti-HLA-DOB Polyclonal Antibody

Cat: K109024P

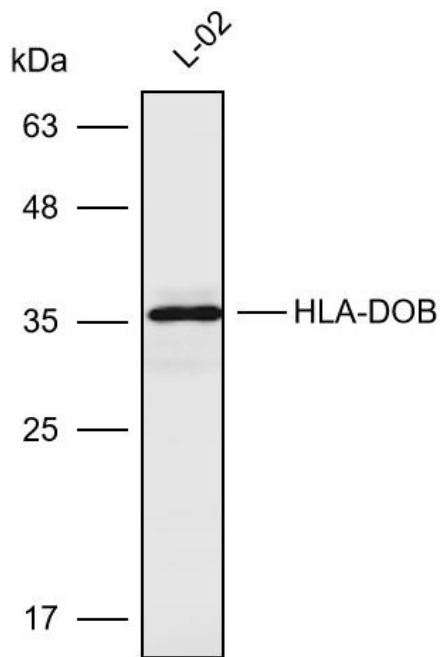
Summary:

【Product name】 : Anti-HLA-DOB antibody	【Source】 : Rabbit
【Isotype】 : IgG	【Species reactivity】 : Human Mouse Rat
【Swiss Prot】 : P13765	【Gene ID】 : 3112
【Calculated】 : MW:31kDa	【Observed】 : MW:36kDa
【Purification】 : Affinity purification	
【Tested applications】 : WB IHC	
【Recommended dilution】 : WB 1:1000-3000. IHC 1:50-200.	
【WB Positive sample】 : L-02	
【IHC Positive sample】 : Human colorectal cancer	
【Subcellular location】 : Cytoplasm	
【Immunogen】 : Recombinant protein of human HLA-DOB	
【Storage】 : Shipped at 4°C. Upon delivery aliquot and store at -20°C	

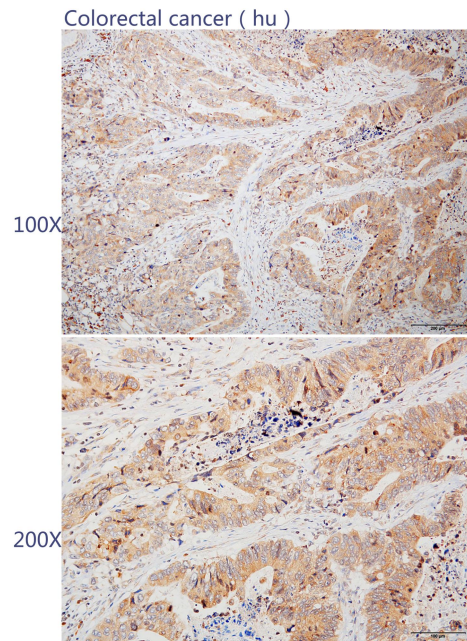
Background:

HLA-DOB belongs to the HLA class II beta chain paralogues. This class II molecule is a heterodimer consisting of an alpha (DOA) and a beta chain (DOB), both anchored in the membrane. It is located in intracellular vesicles. DO suppresses peptide loading of MHC class II molecules by inhibiting HLA-DM. Class II molecules are expressed in antigen presenting cells (APC: B lymphocytes, dendritic cells, macrophages). The beta chain is approximately 26-28 kDa and its gene contains 6 exons. Exon one encodes the leader peptide, exons 2 and 3 encode the two extracellular domains, exon 4 encodes the transmembrane domain and exon 5 encodes the cytoplasmic tail.

Verified picture



Western blot analysis with HLA-DOB antibody diluted at 1:2000; Lane: L-02



Immunohistochemistry of paraffin-embedded Human colorectal cancer with HLA-DOB antibody diluted at 1:100