

Anti-NHP2L1 Polyclonal Antibody

Cat: K109016P

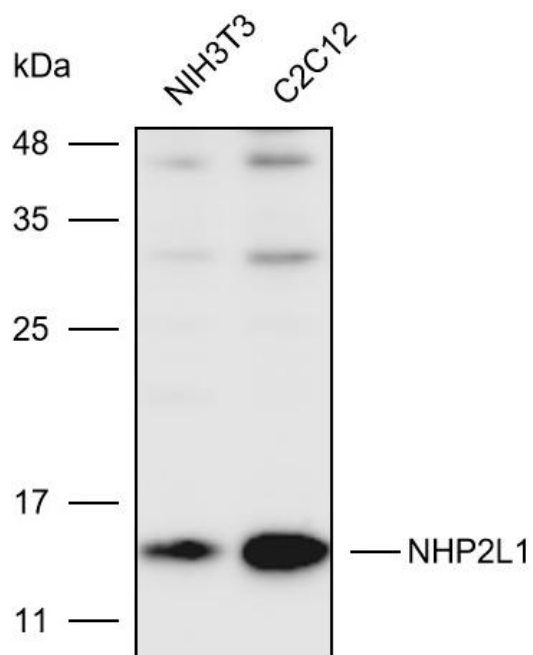
Summary:

【Product name】 : Anti-NHP2L1 antibody	【Source】 : Rabbit
【Isotype】 : IgG	【Species reactivity】 : Human Mouse Rat
【Swiss Prot】 : P55769	【Gene ID】 : 4809
【Calculated】 : MW:14kDa	【Observed】 : MW:14kDa
【Purification】 : Affinity purification	
【Tested applications】 : WB	
【Recommended dilution】 : WB 1:1000-3000.	
【WB Positive sample】 : NIH3T3,C2C12	
【Subcellular location】 : Nucleus	
【Immunogen】 : A synthetic peptide of Human NHP2L1	
【Storage】 : Shipped at 4°C. Upon delivery aliquot and store at -20°C	

Background:

Originally named because of its sequence similarity to the *Saccharomyces cerevisiae* NHP2 (non-histone protein 2), this protein appears to be a highly conserved nuclear protein that is a component of the [U4/U6.U5] tri-snRNP. It binds to the 5' stem-loop of U4 snRNA. Two transcript variants encoding the same protein have been found for this gene.

Verified picture



Western blot analysis with NHP2L1 antibody
diluted at 1:2000; Lane: NIH3T3, C2C12