

Anti-LMNB1 Polyclonal Antibody

Cat: K109011P

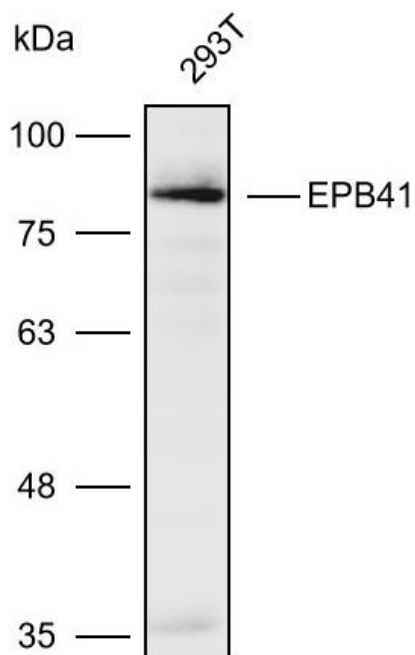
Summary:

【Product name】 : Anti-LMNB1 antibody	【Source】 : Rabbit
【Isotype】 : IgG	【Species reactivity】 : Human Mouse
【Swiss Prot】 : P11171	【Gene ID】 : 2035
【Calculated】 : MW:63/66/72/81/87/93/97kDa	【Observed】 : MW:85kDa
【Purification】 : Affinity purification	
【Tested applications】 : WB	
【Recommended dilution】 : WB 1:1000-3000.	
【WB Positive sample】 : 293T	
【Subcellular location】 : Cytoplasm	
【Immunogen】 : A synthetic peptide of Human LMNB1	
【Storage】 : Shipped at 4°C. Upon delivery aliquot and store at -20°C	

Background:

Protein 4.1 is a major structural element of the erythrocyte membrane skeleton. It plays a key role in regulating membrane physical properties of mechanical stability and deformability by stabilizing spectrin-actin interaction. Recruits DLG1 to membranes. Required for dynein-dynactin complex and NUMA1 recruitment at the mitotic cell cortex during anaphase.

Verified picture



Western blot analysis with LMNB1 antibody
diluted at 1:2000; Lane: 293T