

Anti-GPR107 Ponoclonal Antibody

Cat: K109004P

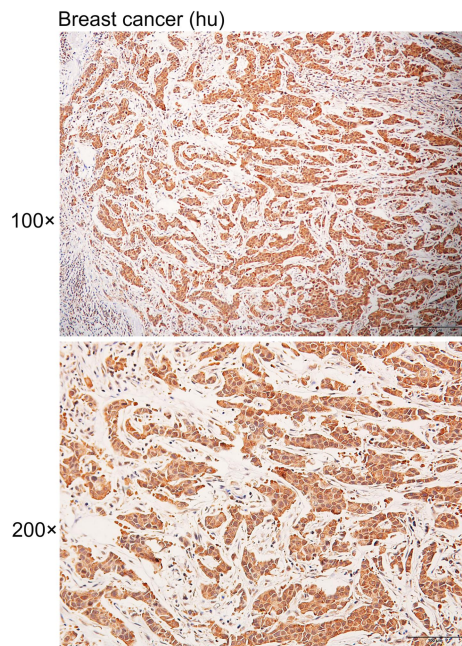
Summary:

【Product name】 : Anti-GPR107 antibody	【Source】 : Rabbit
【Isotype】 : IgG	【Species reactivity】 : Human Mouse Rat
【Swiss Prot】 : Q5VW38	【Gene ID】 : 57720
【Calculated】 : MW:33/62/67kDa	
【Purification】 : Affinity purification	
【Tested applications】 : IHC	
【Recommended dilution】 : IHC 1:50-200.	
【IHC Positive sample】 : Human breast cancer	
【Subcellular location】 : Cytoplasm Nucleus	
【Immunogen】 : A synthetic peptide of Human GPR107	
【Storage】 : Shipped at 4°C. Upon delivery aliquot and store at -20°C	

Background:

Involved in Golgi-to-ER retrograde transport. Functions as a host factor required for infection by *Pseudomonas aeruginosa* exotoxin A and *Campylobacter jejuni* CDT toxins.

Verified picture



Immunohistochemistry of paraffin-embedded
Human breast cancer with GPR107 antibody
diluted at 1:80