

## Anti-RCBTB1 Polyclonal Antibody

Cat: K108988P

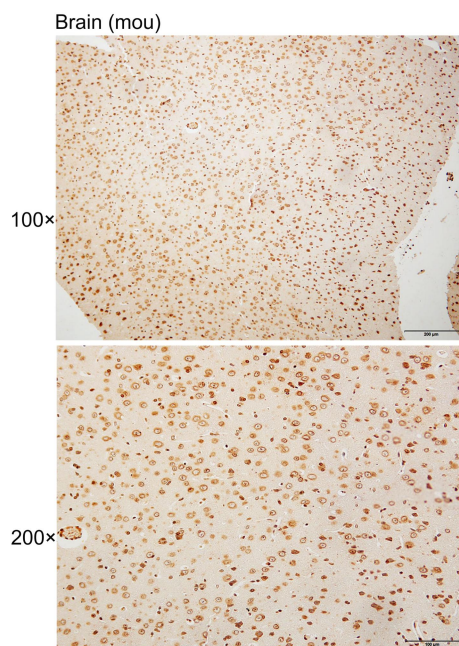
### Summary:

【Product name】 : Anti-RCBTB1 antibody	【Source】 : Rabbit
【Isotype】 : IgG	【Species reactivity】 : Human Mouse Rat
【Swiss Prot】 : Q8NDN9	【Gene ID】 : 55213
【Calculated】 : MW:38/58kDa	
【Purification】 : Affinity purification	
【Tested applications】 : IHC	
【Recommended dilution】 : IHC 1:50-200.	
【IHC Positive sample】 : Mouse brain	
【Subcellular location】 : Nucleus	
【Immunogen】 : A synthetic peptide of Human RCBTB1	
【Storage】 : Shipped at 4°C. Upon delivery aliquot and store at -20°C	

### Background:

This gene encodes a protein with an N-terminal RCC1 domain and a C-terminal BTB (broad complex, tramtrack and bric-a-brac) domain. In rat, over-expression of this gene in vascular smooth muscle cells induced cellular hypertrophy. In rat, the C-terminus of RCBTB1 interacts with the angiotensin II receptor-1A. In humans, this gene maps to a region of chromosome 13q that is frequently deleted in B-cell chronic lymphocytic leukemia and other lymphoid malignancies.

## Verified picture



Immunohistochemistry of paraffin-embedded  
Mouse brain with RCBTB1 antibody diluted  
at 1:100