

## Anti-POTEA Polyclonal Antibody

Cat: K108986P

### Summary:

---

**【Product name】** : Anti-POTEA antibody

**【Source】** : Rabbit

**【Isotype】** : IgG

**【Species reactivity】** : Human

**【Swiss Prot】** : Q6S8J7

**【Gene ID】** : 340441

**【Calculated】** : MW:51/56kDa

**【Observed】** : MW:52kDa

**【Purification】** : Affinity purification

**【Tested applications】** : WB

**【Recommended dilution】** : WB 1:1000-3000.

**【WB Positive sample】** : MCF7,MDA-MB-231,HepG2,7721

**【Subcellular location】** :

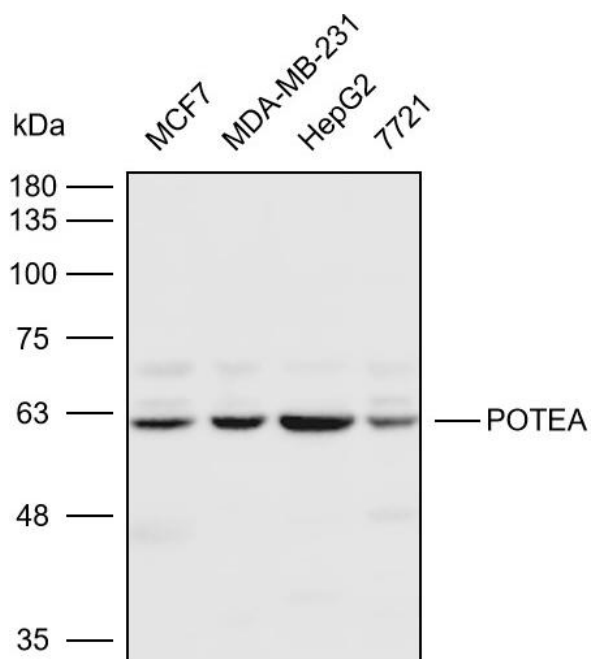
**【Immunogen】** : A synthetic peptide of Human POTEA

**【Storage】** : Shipped at 4°C. Upon delivery aliquot and store at -20°C

### Background:

---

## Verified picture



Western blot analysis with POTEA antibody  
diluted at 1:2000; Lane: MCF7, MDA-MB-231,  
HepG2, 7721