

Anti-SLC16A14 Polyclonal Antibody

Cat: K108985P

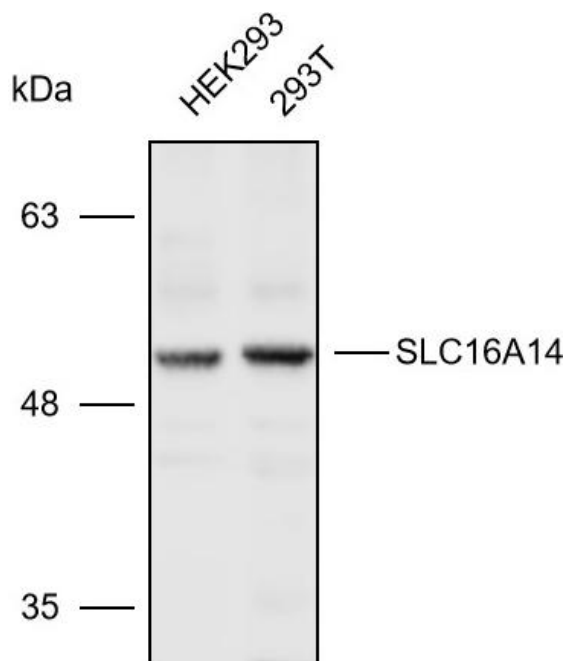
Summary:

【Product name】 : Anti-SLC16A14 antibody	【Source】 : Rabbit
【Isotype】 : IgG	【Species reactivity】 : Human
【Swiss Prot】 : Q7RTX9	【Gene ID】 : 151473
【Calculated】 : MW:37/56kDa	【Observed】 : MW:52kDa
【Purification】 : Affinity purification	
【Tested applications】 : WB	
【Recommended dilution】 : WB 1:1000-3000.	
【WB Positive sample】 : HEK293,293T	
【Subcellular location】 : Cytoplasm Cell membrane	
【Immunogen】 : A synthetic peptide of Human SLC16A14	
【Storage】 : Shipped at 4°C. Upon delivery aliquot and store at -20°C	

Background:

Proton-linked monocarboxylate transporter. May catalyze the transport of monocarboxylates across the plasma membrane.

Verified picture



Western blot analysis with SLC16A14 antibody
diluted at 1:2000; Lane: HEK293, 293T