

Anti-GLRB Polyclonal Antibody

Cat: K108984P

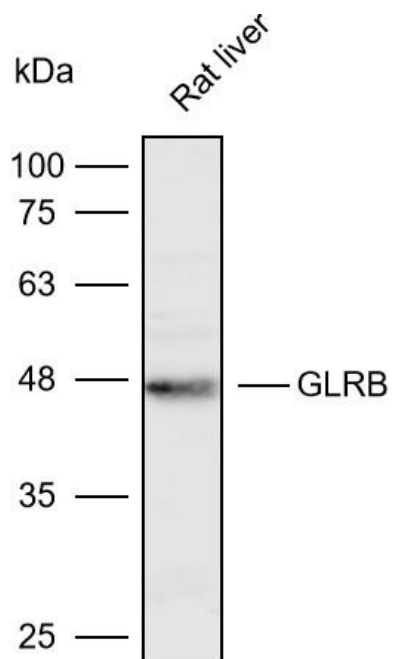
Summary:

【Product name】 : Anti-GLRB antibody	【Source】 : Rabbit
【Isotype】 : IgG	【Species reactivity】 : Human Mouse Rat
【Swiss Prot】 : P48167	【Gene ID】 : 2743
【Calculated】 : MW:35/56kDa	【Observed】 : MW:48kDa
【Purification】 : Affinity purification	
【Tested applications】 : WB	
【Recommended dilution】 : WB 1:1000-3000.	
【WB Positive sample】 : Rat liver	
【Subcellular location】 : Cytoplasm	
【Immunogen】 : A synthetic peptide of Human GLRB	
【Storage】 : Shipped at 4°C. Upon delivery aliquot and store at -20°C	

Background:

Glycine receptors are ligand-gated chloride channels. GLRB does not form ligand-gated ion channels by itself, but is part of heteromeric ligand-gated chloride channels. Channel opening is triggered by extracellular glycine. Heteropentameric channels composed of GLRB and GLRA1 are activated by lower glycine levels than homopentameric GLRA. Plays an important role in the down-regulation of neuronal excitability. Contributes to the generation of inhibitory postsynaptic currents.

Verified picture



Western blot analysis with GLRB antibody
diluted at 1:2000; Lane: Rat liver