

Anti-CDYL2 Polyclonal Antibody

Cat: K108983P

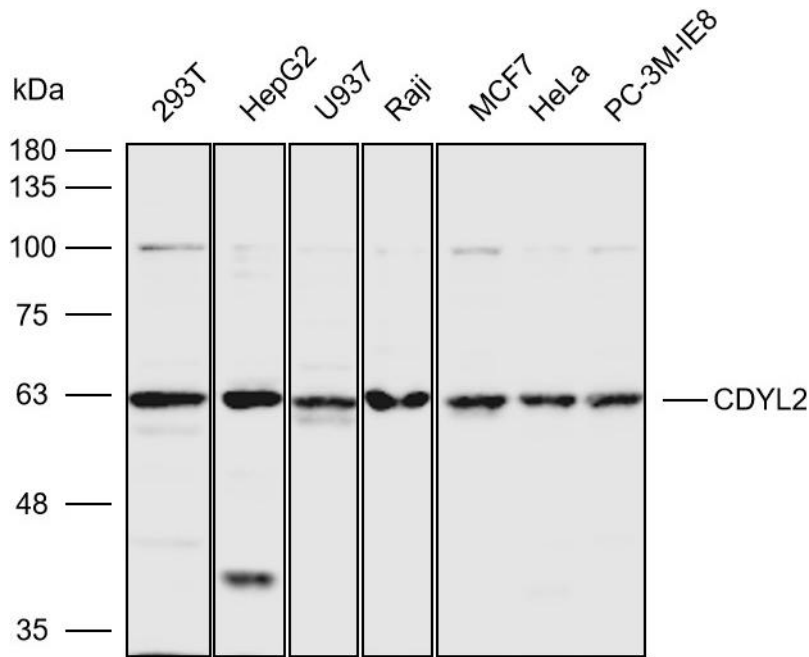
Summary:

【Product name】 : Anti-CDYL2 antibody	【Source】 : Rabbit
【Isotype】 : IgG	【Species reactivity】 : Human
【Swiss Prot】 : Q8N8U2	【Gene ID】 : 124359
【Calculated】 : MW:57kDa	【Observed】 : MW:63kDa
【Purification】 : Affinity purification	
【Tested applications】 : WB IHC	
【Recommended dilution】 : WB 1:1000-3000. IHC 1:50-200.	
【WB Positive sample】 : 293T,HepG2,U937,Raji,MCF7,Hela,PC-3M-IE8	
【IHC Positive sample】 : Human thyroid cancer	
【Subcellular location】 : Nucleus	
【Immunogen】 : A synthetic peptide of Human CDYL2	
【Storage】 : Shipped at 4°C. Upon delivery aliquot and store at -20°C	

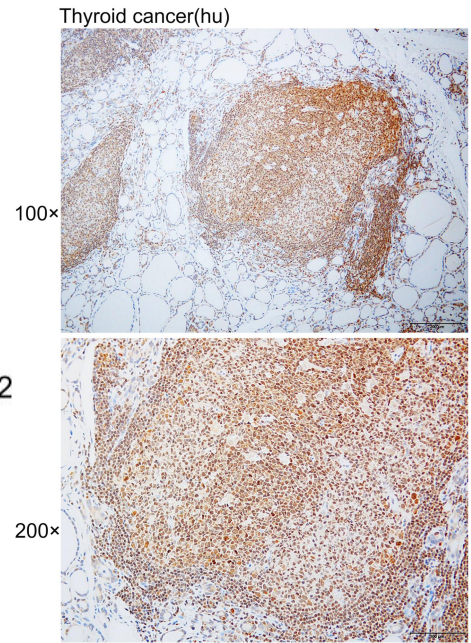
Background:

CDYL2 contains 1 chromo domain. The exact function of CDYL2 remains unknown.

Verified picture



Western blot analysis with CDYL2 antibody diluted at 1:2000; Lane: 293T, HepG2, U937, Raji, MCF7, HeLa, PC-3M-IE8



Immunohistochemistry of paraffin-embedded Human thyroid cancer with CDYL2 antibody diluted at 1:100