

Anti-SFRS4 Polyclonal Antibody

Cat: K108980P

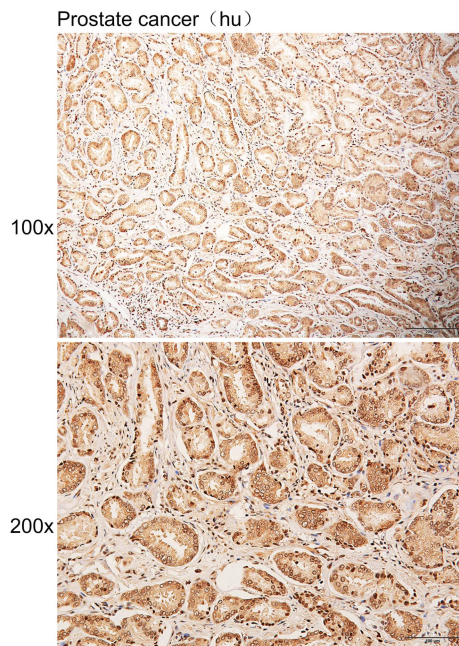
Summary:

- | | |
|---|---|
| 【Product name】 : Anti-SFRS4 antibody | 【Source】 : Rabbit |
| 【Isotype】 : IgG | 【Species reactivity】 : Human Mouse |
| 【Swiss Prot】 : Q08170 | 【Gene ID】 : 6429 |
| 【Calculated】 : MW:56.6kDa | |
| 【Purification】 : Affinity purification | |
| 【Tested applications】 : IHC | |
| 【Recommended dilution】 : IHC 1:50-200. | |
| 【IHC Positive sample】 : Human prostate cancer | |
| 【Subcellular location】 : Nucleus | |
| 【Immunogen】 : A synthetic peptide of Human SFRS4 | |
| 【Storage】 : Shipped at 4°C. Upon delivery aliquot and store at -20°C | |

Background:

Plays a role in alternative splice site selection during pre-mRNA splicing. Represses the splicing of MAPT/Tau exon 10.

Verified picture



Immunohistochemistry of paraffin-embedded
Human prostate cancer with SFRS4 antibody
diluted at 1:80