

Anti-CHST9 Polyclonal Antibody

Cat: K108936P

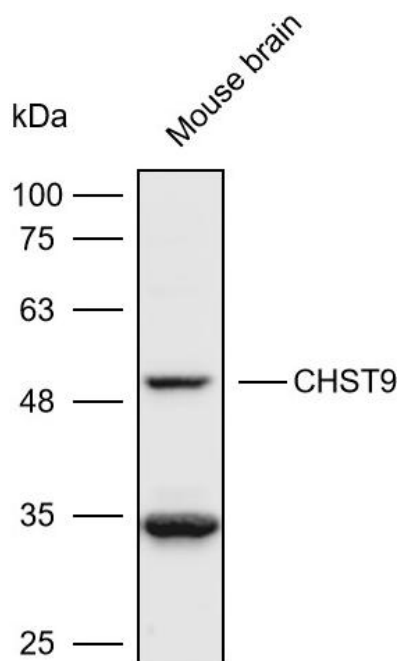
Summary:

【Product name】 : Anti-CHST9 antibody	【Source】 : Rabbit
【Isotype】 : IgG	【Species reactivity】 : Human Mouse
【Swiss Prot】 : Q7L1S5	【Gene ID】 : 83539
【Calculated】 : MW:9/52kDa	【Observed】 : MW:51kDa
【Purification】 : Affinity purification	
【Tested applications】 : WB IHC	
【Recommended dilution】 : WB 1:2000-5000. IHC 1:50-200.	
【WB Positive sample】 : Mouse brain	
【IHC Positive sample】 : Human pancreatic cancer	
【Subcellular location】 : Cytoplasm	
【Immunogen】 : A synthetic peptide of Human CHST9	
【Storage】 : Shipped at 4°C. Upon delivery aliquot and store at -20°C	

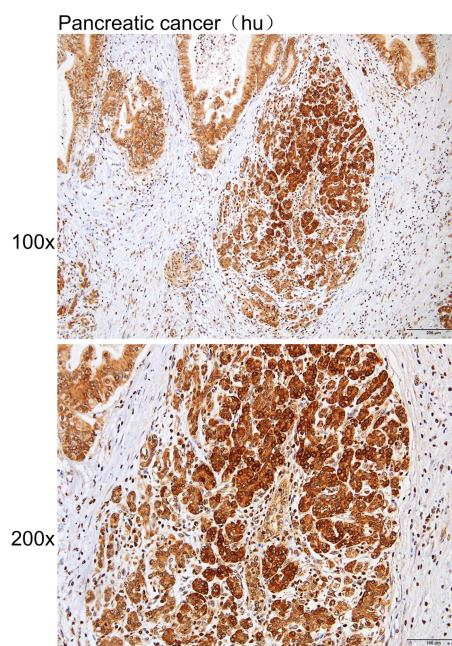
Background:

Sulfate groups in carbohydrates confer highly specific functions on glycoproteins, glycolipids, and proteoglycans and are critical for cell-cell interaction, signal transduction, and embryonic development. Sulfotransferases, such as CHST9, carry out sulfation of carbohydrates.

Verified picture



Western blot analysis with CHST9 antibody diluted at 1:4000; Lane: Mouse brain



Immunohistochemistry of paraffin-embedded Human pancreatic cancer with CHST9 antibody diluted at 1:80