

Anti-IL1B Polyclonal Antibody

Cat: K108840P

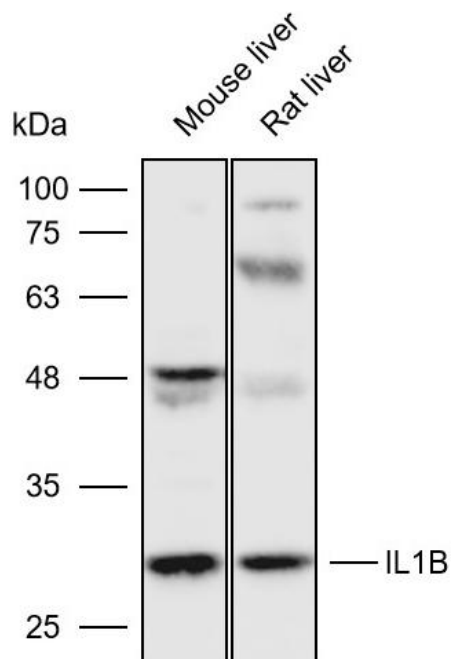
Summary:

【Product name】 : Anti-IL1B antibody	【Source】 : Rabbit
【Isotype】 : IgG	【Species reactivity】 : Human Mouse Rat
【Swiss Prot】 : P01584	【Gene ID】 : 3553
【Calculated】 : MW:31kDa	【Observed】 : MW:29kDa
【Purification】 : Affinity purification	
【Tested applications】 : WB IHC	
【Recommended dilution】 : WB 1:2000-5000. IHC 1:25-100.	
【WB Positive sample】 : Mouse liver,Rat liver	
【IHC Positive sample】 : Human stomach cancer	
【Subcellular location】 : Cytoplasm	
【Immunogen】 : Recombinant protein of human IL1B	
【Storage】 : Shipped at 4°C. Upon delivery aliquot and store at -20°C	

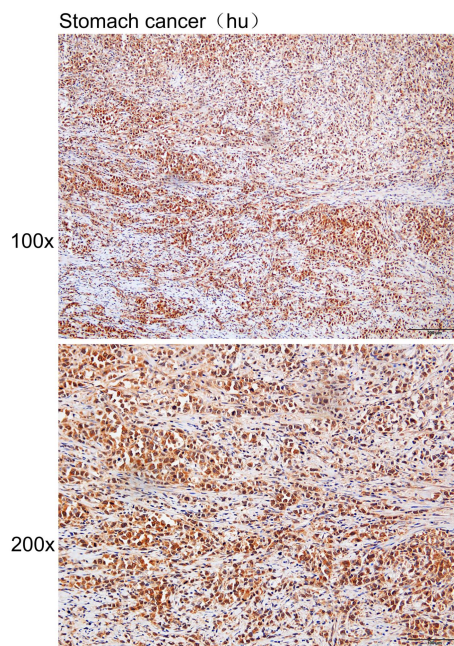
Background:

The protein encoded by this gene is a member of the interleukin 1 cytokine family. This cytokine is produced by activated macrophages as a proprotein, which is proteolytically processed to its active form by caspase 1 (CASP1/ICE). This cytokine is an important mediator of the inflammatory response, and is involved in a variety of cellular activities, including cell proliferation, differentiation, and apoptosis. The induction of cyclooxygenase-2 (PTGS2/COX2) by this cytokine in the central nervous system (CNS) is found to contribute to inflammatory pain hypersensitivity. This gene and eight other interleukin 1 family genes form a cytokine gene cluster on chromosome 2.

Verified picture



Western blot analysis with IL1B antibody diluted at 1:4000; Lane: Mouse liver, Rat liver



Immunohistochemistry of paraffin-embedded Human stomach cancer with IL1B antibody diluted at 1:40