

## Anti-KLF8 Polyclonal Antibody

Cat: K108536P

### Summary:

---

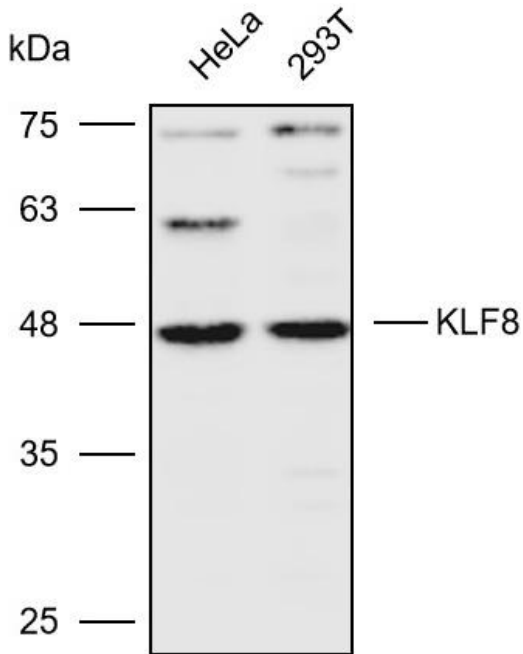
<b>【Product name】</b> : Anti-KLF8 antibody	<b>【Source】</b> : Rabbit
<b>【Isotype】</b> : IgG	<b>【Species reactivity】</b> : Human Mouse
<b>【Swiss Prot】</b> : O95600	<b>【Gene ID】</b> : 11279
<b>【Calculated】</b> : MW:27/30/39kDa	<b>【Observed】</b> : MW:48kDa
<b>【Purification】</b> : Affinity purification	
<b>【Tested applications】</b> : WB IHC	
<b>【Recommended dilution】</b> : WB 1:2000-5000. IHC 1:50-200.	
<b>【WB Positive sample】</b> : Hela,293T	
<b>【IHC Positive sample】</b> : Human prostate cancer	
<b>【Subcellular location】</b> : Nucleus	
<b>【Immunogen】</b> : A synthetic peptide of Human KLF8	
<b>【Storage】</b> : Shipped at 4°C. Upon delivery aliquot and store at -20°C	

### Background:

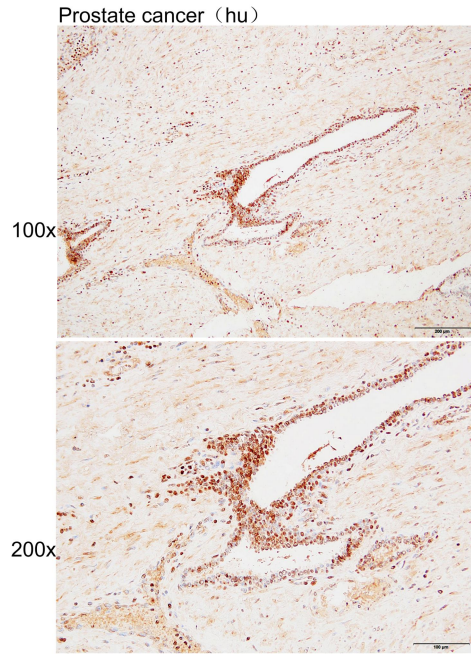
---

Transcriptional repressor and activator. Binds to CACCC-boxes promoter elements. Also binds the GT-box of cyclin D1 promoter and mediates cell cycle progression at G1 phase as a downstream target of focal adhesion kinase.

## Verified picture



Western blot analysis with KLF8 antibody diluted at 1:4000; Lane: HeLa, 293T



Immunohistochemistry of paraffin-embedded Human prostate cancer with KLF8 antibody diluted at 1:80