

## Anti-TKT Polyclonal Antibody

Cat: K108470P

### Summary:

---

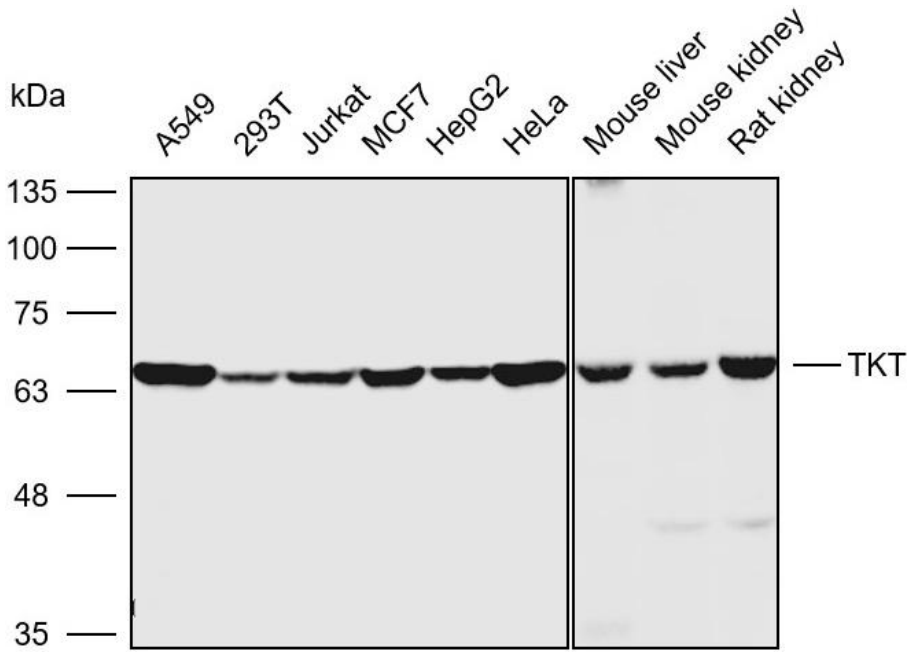
<b>【Product name】</b> : Anti-TKT antibody	<b>【Source】</b> : Rabbit
<b>【Isotype】</b> : IgG	<b>【Species reactivity】</b> : Human Mouse Rat
<b>【Swiss Prot】</b> : P29401	<b>【Gene ID】</b> : 7086
<b>【Calculated】</b> : MW:68kDa	<b>【Observed】</b> : MW:66kDa
<b>【Purification】</b> : Affinity purification	
<b>【Tested applications】</b> : WB IHC	
<b>【Recommended dilution】</b> : WB 1:2000-5000. IHC 1:50-200.	
<b>【WB Positive sample】</b> : A549,293T,Jurkat,MCF7,HepG2,Hela,Moue liver,Mouse kidney,Rat kidney	
<b>【IHC Positive sample】</b> : Human esophageal cancer	
<b>【Subcellular location】</b> : Nucleus Cytoplasm	
<b>【Immunogen】</b> : Recombinant protein of human TKT	
<b>【Storage】</b> : Shipped at 4°C. Upon delivery aliquot and store at -20°C	

### Background:

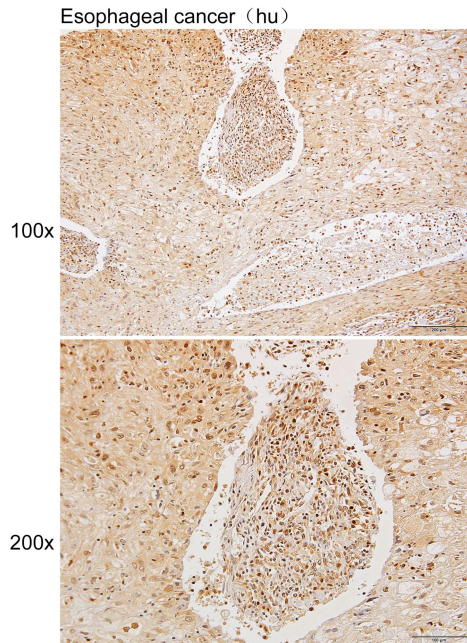
---

This gene encodes a thiamine-dependent enzyme which plays a role in the channeling of excess sugar phosphates to glycolysis in the pentose phosphate pathway. Alternatively spliced transcript variants encoding multiple isoforms have been observed for this gene.

## Verified picture



Western blot analysis with TKT antibody diluted at 1:2000;  
Lane: A549,293T,Jurkat,MCF7,HepG2,Hela,Moue liver,  
Mouse kidney,Rat kidney



Immunohistochemistry of paraffin-embedded  
Human esophageal cancer with TKT antibody  
diluted at 1:200