

## Anti-LMX1B Polyclonal Antibody

Cat: K108443P

### Summary:

---

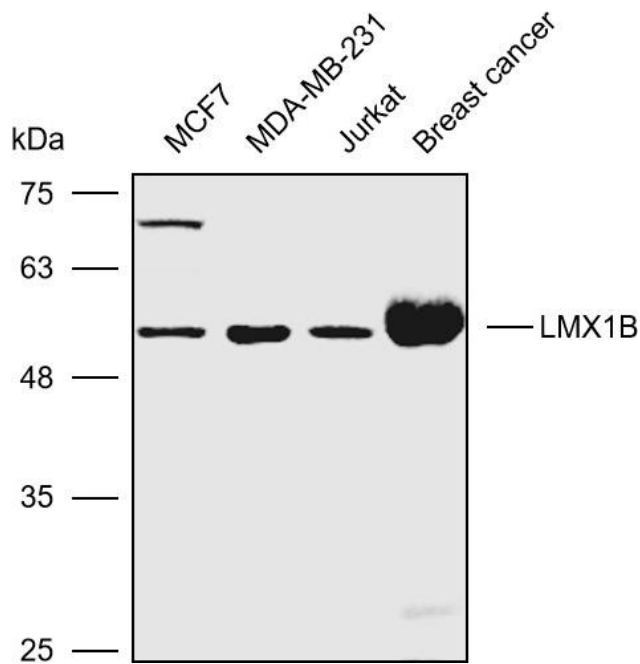
<b>【Product name】</b> : Anti-LMX1B antibody	<b>【Source】</b> : Rabbit
<b>【Isotype】</b> : IgG	<b>【Species reactivity】</b> : Human Mouse
<b>【Swiss Prot】</b> : O60663	<b>【Gene ID】</b> : 4010
<b>【Calculated】</b> : MW:42kDa	<b>【Observed】</b> : MW:44kDa
<b>【Purification】</b> : Affinity purification	
<b>【Tested applications】</b> : WB	
<b>【Recommended dilution】</b> : WB 1:1000-3000.	
<b>【WB Positive sample】</b> : MCF7,MDA-MB-231,Jurkat,Human breast cancer	
<b>【Subcellular location】</b> : Nucleus	
<b>【Immunogen】</b> : A synthetic peptide of human LMX1B	
<b>【Storage】</b> : Shipped at 4°C. Upon delivery aliquot and store at -20°C	

### Background:

---

Essential for the specification of dorsal limb fate at both the zeugopodal and autopodal levels.

## Verified picture



Western blot analysis with LMX1B antibody diluted at 1:2000; Lane: MCF7,MDA-MB-231,Jurkat,Human breast cancer