

Anti-CYSLTR1 Polyclonal Antibody

Cat: K108423P

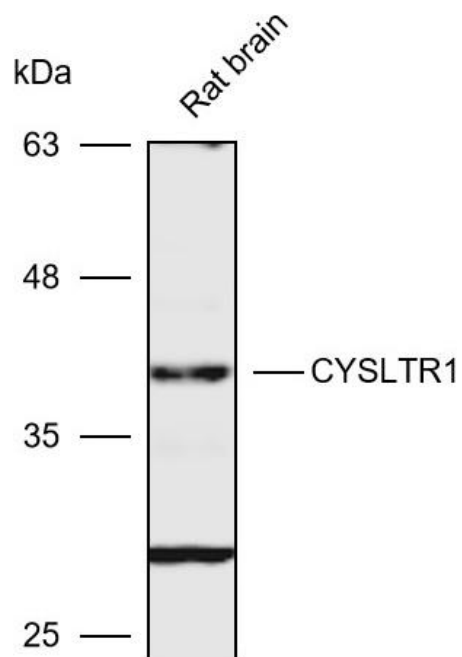
Summary:

【Product name】 : Anti-CYSLTR1 antibody	【Source】 : Rabbit
【Isotype】 : IgG	【Species reactivity】 : Human
【Swiss Prot】 : Q9Y271	【Gene ID】 : 10800
【Calculated】 : MW:38kDa	【Observed】 : MW:40kDa
【Purification】 : Octanoic acid-ammonium sulfate precipitation	
【Tested applications】 : WB	
【Recommended dilution】 : WB 1:1000-3000.	
【WB Positive sample】 : Rat brain	
【Subcellular location】 : Cytoplasm	
【Immunogen】 : A synthetic peptide of human CYSLTR1	
【Storage】 : Shipped at 4°C. Upon delivery aliquot and store at -20°C	

Background:

Receptor for cysteinyl leukotrienes mediating bronchoconstriction of individuals with and without asthma. Stimulation by LTD₄ results in the contraction and proliferation of smooth muscle, edema, eosinophil migration and damage to the mucus layer in the lung. This response is mediated via a G-protein that activates a phosphatidylinositol-calcium second messenger system. The rank order of affinities for the leukotrienes is LTD₄ >> LTE₄ = LTC₄ >> LTB₄.

Verified picture



Western blot analysis with CYSLTR1 antibody
diluted at 1:2000; Lane: Rat brain