

Anti-P2RY14 Polyclonal Antibody

Cat: K108422P

Summary:

【Product name】 : Anti-P2RY14 antibody

【Source】 : Rabbit

【Isotype】 : IgG

【Species reactivity】 : Human Mouse Rat

【Swiss Prot】 : Q15391

【Gene ID】 : 9934

【Calculated】 : MW:38kDa

【Purification】 : Affinity purification

【Tested applications】 : IHC

【Recommended dilution】 : IHC 1:50-200.

【IHC Positive sample】 : Human cervical cancer

【Subcellular location】 : Cytoplasm Nucleus

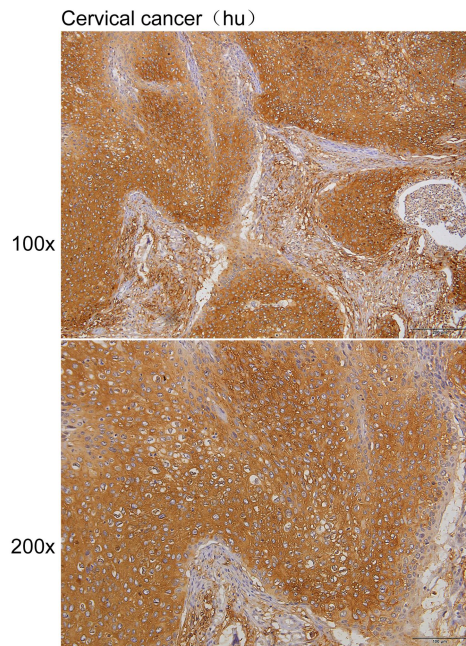
【Immunogen】 : A synthetic peptide of human P2RY14

【Storage】 : Shipped at 4°C. Upon delivery aliquot and store at -20°C

Background:

Receptor for UDP-glucose and other UDP-sugar coupled to G-proteins. Not activated by ATP, ADP, UTP or ATP.

Verified picture



Immunohistochemistry of paraffin-embedded
Human cervical cancer with P2RY14 antibody
diluted at 1:100