

## Anti-CYSLTR1 Polyclonal Antibody

Cat: K108421P

### Summary:

---

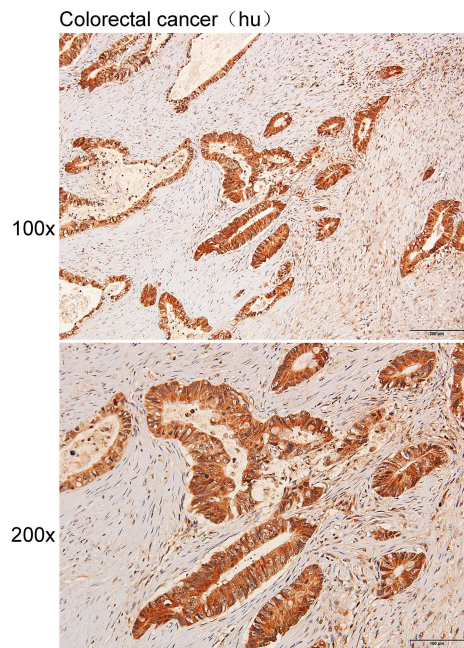
<b>【Product name】</b> : Anti-CYSLTR1 antibody	<b>【Source】</b> : Rabbit
<b>【Isotype】</b> : IgG	<b>【Species reactivity】</b> : Human
<b>【Swiss Prot】</b> : Q9Y271	<b>【Gene ID】</b> : 10800
<b>【Calculated】</b> : MW:38kDa	
<b>【Purification】</b> : Affinity purification	
<b>【Tested applications】</b> : IHC	
<b>【Recommended dilution】</b> : IHC 1:100-300.	
<b>【IHC Positive sample】</b> : Human colorectal cancer	
<b>【Subcellular location】</b> : Cytoplasm	
<b>【Immunogen】</b> : A synthetic peptide of human CYSLTR1	
<b>【Storage】</b> : Shipped at 4°C. Upon delivery aliquot and store at -20°C	

### Background:

---

Receptor for cysteinyl leukotrienes mediating bronchoconstriction of individuals with and without asthma. Stimulation by LTD<sub>4</sub> results in the contraction and proliferation of smooth muscle, edema, eosinophil migration and damage to the mucus layer in the lung. This response is mediated via a G-protein that activates a phosphatidylinositol-calcium second messenger system. The rank order of affinities for the leukotrienes is LTD<sub>4</sub> >> LTE<sub>4</sub> = LTC<sub>4</sub> >> LTB<sub>4</sub>.

## Verified picture



Immunohistochemistry of paraffin-embedded  
Human colorectal cancer with CYSLTR1  
antibody diluted at 1:200