

## Anti-B3GALT1 Polyclonal Antibody

Cat: K108403P

### Summary:

---

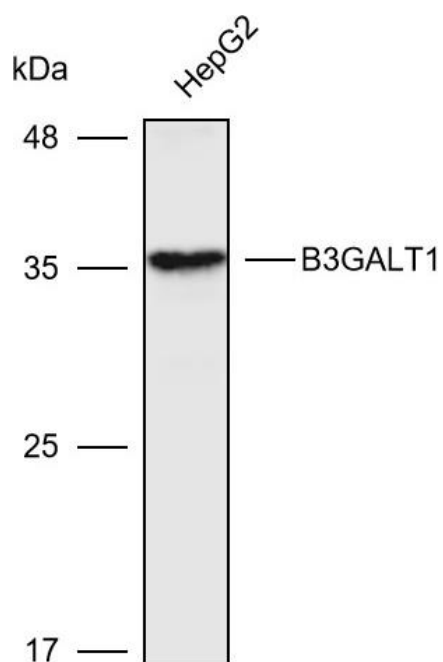
<b>【Product name】</b> : Anti-B3GALT1 antibody	<b>【Source】</b> : Rabbit
<b>【Isotype】</b> : IgG	<b>【Species reactivity】</b> : Human Mouse
<b>【Swiss Prot】</b> : Q9Y5Z6	<b>【Gene ID】</b> : 8708
<b>【Calculated】</b> : MW:37kDa	<b>【Observed】</b> : MW:36kDa
<b>【Purification】</b> : Affinity purification	
<b>【Tested applications】</b> : WB IHC	
<b>【Recommended dilution】</b> : 1:1000-3000. IHC 1:50-200.	
<b>【WB Positive sample】</b> : HepG2	
<b>【IHC Positive sample】</b> : Rat Large intestine	
<b>【Subcellular location】</b> : Cytoplasm	
<b>【Immunogen】</b> : A synthetic peptide of human B3GALT1.	
<b>【Storage】</b> : Shipped at 4°C. Upon delivery aliquot and store at -20°C	

### Background:

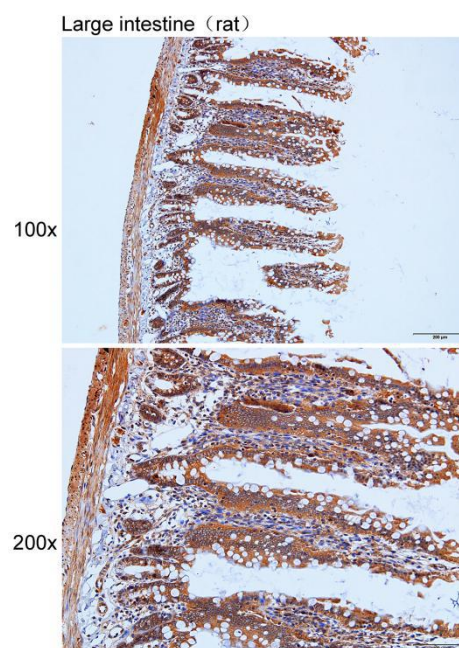
---

Beta-1,3-galactosyltransferase that transfers galactose from UDP-alpha-D-galactose to substrates with a terminal beta-N-acetylglucosamine (beta-GlcNAc) residue. Involved in the biosynthesis of the carbohydrate moieties of glycolipids and glycoproteins. Inactive towards substrates with terminal alpha-N-acetylglucosamine (alpha-GlcNAc) or alpha-N-acetylgalactosamine (alpha-GalNAc) residues.

## Verified picture



Western blot analysis with B3GALT1 antibody diluted at 1:2000; Lane: HepG2



Immunohistochemistry of paraffin-embedded Rat large intestine with B3GALT1 antibody diluted at 1:100