

Anti-CD300A Ponoclonal Antibody

Cat: K108374P

Summary:

【Product name】 : Anti-CD300A antibody

【Source】 : Rabbit

【Isotype】 : IgG

【Species reactivity】 : Human Rat

【Swiss Prot】 : Q9UGN4

【Gene ID】 : 11314

【Calculated】 : MW:11/17/20/33kDa

【Purification】 : Affinity purification

【Tested applications】 : IHC

【Recommended dilution】 : IHC 1:25-100.

【IHC Positive sample】 : Human pancreatic cancer

【Subcellular location】 : Cell membrane Cytoplasm

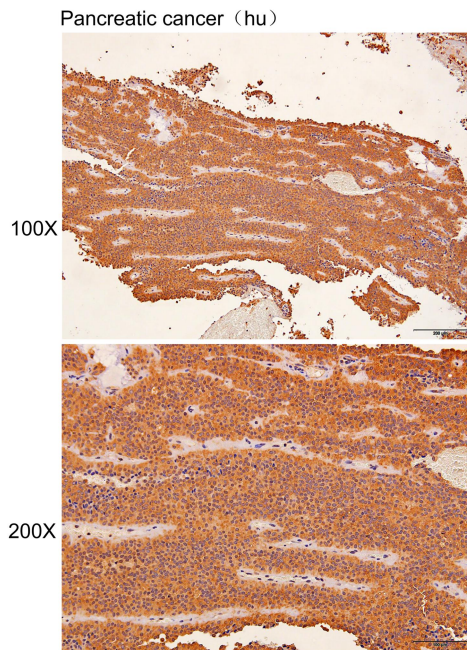
【Immunogen】 : Recombinant protein of human CD300A

【Storage】 : Shipped at 4°C. Upon delivery aliquot and store at -20°C

Background:

This gene encodes a member of the CD300 glycoprotein family of cell surface proteins found on leukocytes involved in immune response signaling pathways. This gene is located on chromosome 17 in a cluster with all but one of the other family members. Multiple transcript variants encoding different isoforms have been found for this gene.

Verified picture



Immunohistochemistry of paraffin-embedded
Human pancreatic cancer with CD300A
antibody diluted at 1:80