

Anti-SEC22B Polyclonal Antibody

Cat: K108367P

Summary:

【Product name】 : Anti-SEC22B antibody

【Source】 : Rabbit

【Isotype】 : IgG

【Species reactivity】 : Human Mouse Rat

【Swiss Prot】 : O75396

【Gene ID】 : 9554

【Calculated】 : MW:25kDa

【Observed】 : MW:25kDa

【Purification】 : Affinity purification

【Tested applications】 : WB IHC

【Recommended dilution】 : WB 1:2000-5000. IHC 1:25-100.

【WB Positive sample】 : SH-SY5Y,A375,MCF7,Jurkat,Hela,A431,THP-1,Mouse brain,Mouse thymus,

Rat brain

【IHC Positive sample】 : Human liver cancer

【Subcellular location】 : Cytoplasm

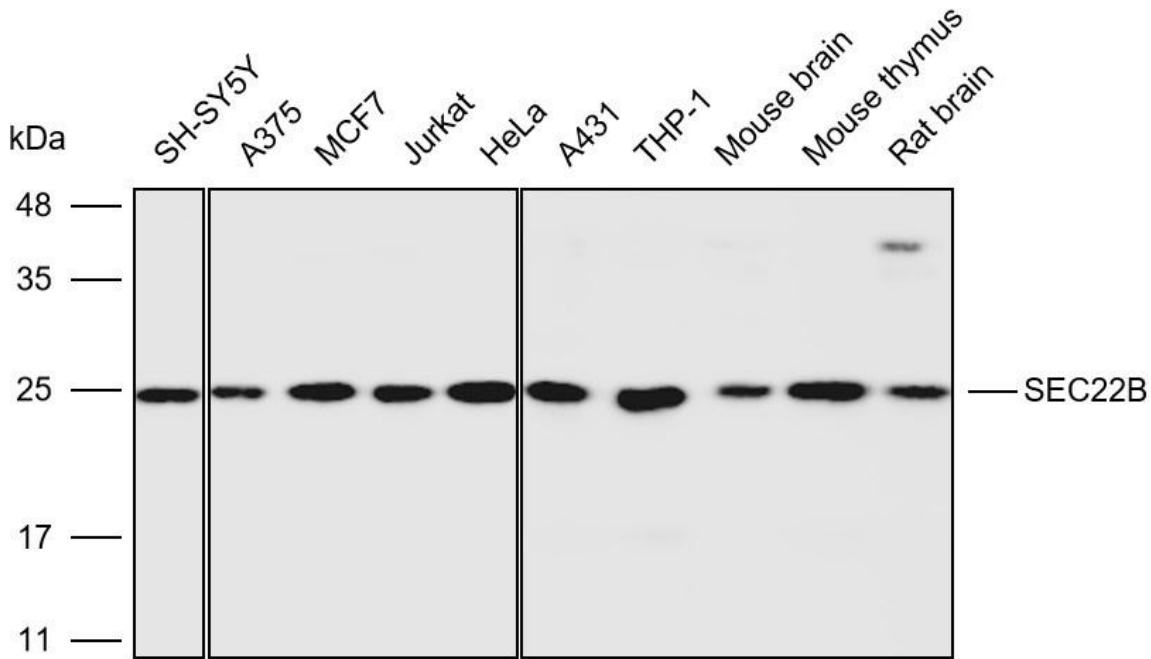
【Immunogen】 : Recombinant protein of human SEC22B

【Storage】 : Shipped at 4°C. Upon delivery aliquot and store at -20°C

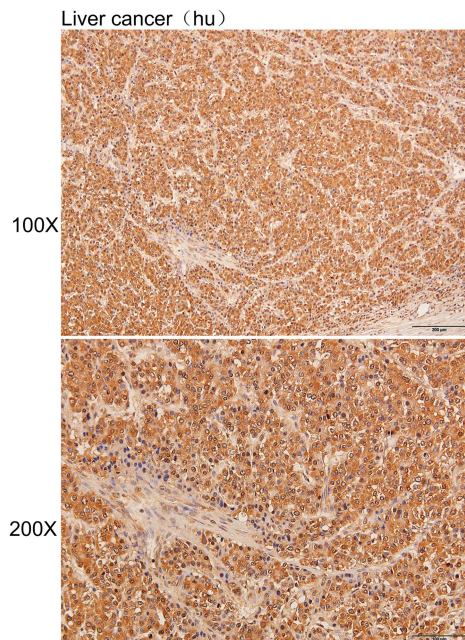
Background:

The protein encoded by this gene is a member of the SEC22 family of vesicle trafficking proteins. It seems to complex with SNARE and it is thought to play a role in the ER-Golgi protein trafficking. This protein has strong similarity to Mus musculus and Cricetulus griseus proteins.

Verified picture



Western blot analysis with SEC22B antibody diluted at 1:4000; Lane: SH-SY5Y, A375, MCF7, Jurkat, HeLa, A431, THP-1, Mouse brain, Mouse thymus, Rat brain



Immunohistochemistry of paraffin-embedded Human liver cancer with SEC22B antibody diluted at 1:40