

Anti-TEAD3 Polyclonal Antibody

Cat: K108352P

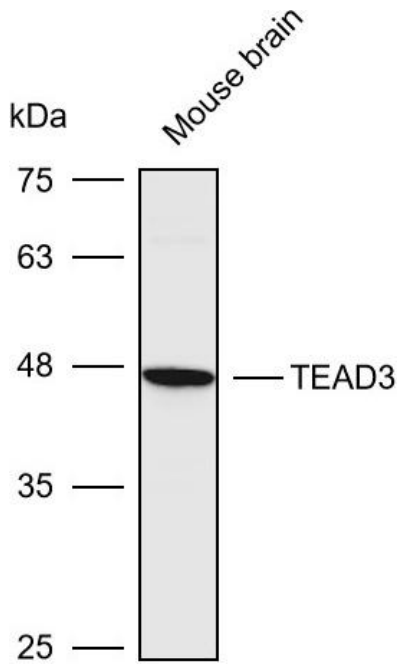
Summary:

【Product name】 : Anti-TEAD3 antibody	【Source】 : Rabbit
【Isotype】 : IgG	【Species reactivity】 : Human Mouse Rat
【Swiss Prot】 : Q99594	【Gene ID】 : 7005
【Calculated】 : MW:49kDa	【Observed】 : MW:46kDa
【Purification】 : Affinity purification	
【Tested applications】 : WB IHC	
【Recommended dilution】 : WB 1:1000-3000. IHC 1:100-300.	
【WB Positive sample】 : Mouse brain	
【IHC Positive sample】 : Human prostate cancer	
【Subcellular location】 : Nucleus Cytoplasm	
【Immunogen】 : Recombinant protein of human TEAD3	
【Storage】 : Shipped at 4°C. Upon delivery aliquot and store at -20°C	

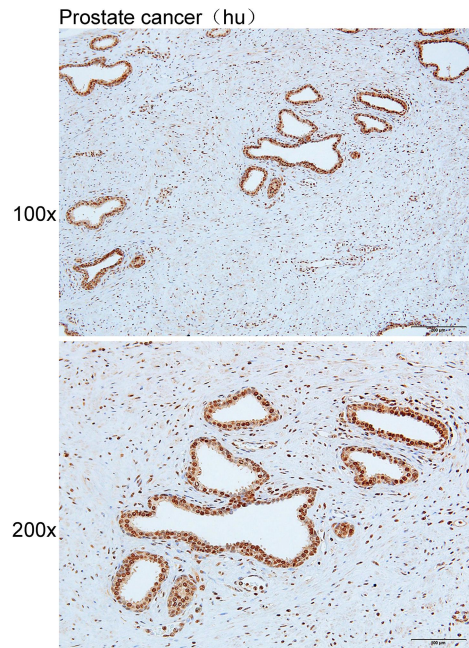
Background:

This gene product is a member of the transcriptional enhancer factor (TEF) family of transcription factors, which contain the TEA/ATTS DNA-binding domain. It is predominantly expressed in the placenta and is involved in the transactivation of the chorionic somatomammotropin-B gene enhancer. Translation of this protein is initiated at a non-AUG (AUA) start codon.

Verified picture



Western blot analysis with TEAD3 antibody diluted at 1:2000; Lane: Mouse brain



Immunohistochemistry of paraffin-embedded Human prostate cancer with TEAD3 antibody diluted at 1:200