

Anti-DRD1 Polyclonal Antibody

Cat: K108311P

Summary:

【Product name】 : Anti-DRD1 antibody

【Source】 : Rabbit

【Isotype】 : IgG

【Species reactivity】 : Human

【Swiss Prot】 : P21728

【Gene ID】 : 1812

【Calculated】 : MW:49kDa

【Purification】 : Affinity purification

【Tested applications】 : IHC

【Recommended dilution】 : IHC 1:50-200.

【IHC Positive sample】 : Rat brain

【Subcellular location】 : Cell membrane

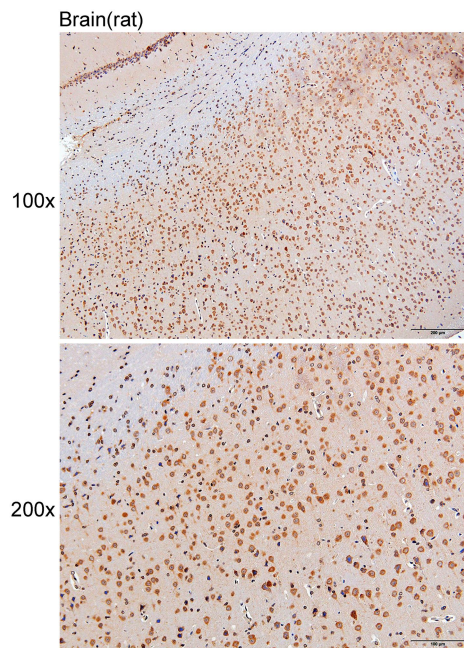
【Immunogen】 : A synthetic peptide of huma DRD1

【Storage】 : Shipped at 4°C. Upon delivery aliquot and store at -20°C

Background:

Dopamine receptor whose activity is mediated by G proteins which activate adenylyl cyclase.

Verified picture



Immunohistochemistry of paraffin-embedded
Rat brain with DRD1 antibody diluted at 1:100