

Anti-TUBA3E Polyclonal Antibody

Cat: K108309P

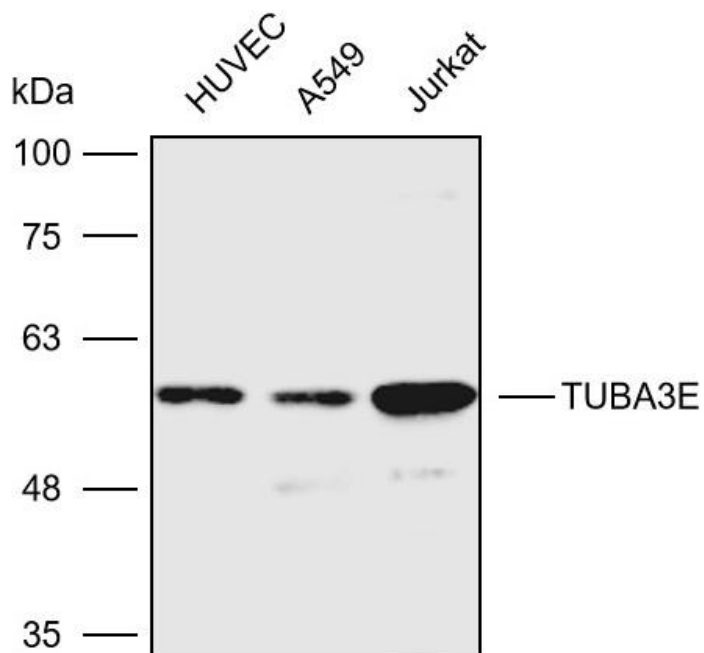
Summary:

【Product name】 : Anti-TUBA3E antibody	【Source】 : Rabbit
【Isotype】 : IgG	【Species reactivity】 : Human Mouse Rat
【Swiss Prot】 : Q13748/Q6PEY2	【Gene ID】 : 113457/7278/112714
【Calculated】 : MW:49kDa	【Observed】 : MW:57kDa
【Purification】 : Affinity purification	
【Tested applications】 : WB	
【Recommended dilution】 : WB 1:1000-3000.	
【WB Positive sample】 : HUVEC,A549,Jurkat	
【Subcellular location】 : Cytoplasm	
【Immunogen】 : A synthetic peptide of human TUBA3E	
【Storage】 : Shipped at 4°C. Upon delivery aliquot and store at -20°C	

Background:

Tubulin is the major constituent of microtubules. It binds two moles of GTP; one at an exchangeable site on the beta chain and one at a non-exchangeable site on the alpha chain.

Verified picture



Western blot analysis with TUBA3E antibody diluted
at 1:2000; Lane: HUVEC, A549, Jurkat