

## Anti-TBL2 Polyclonal Antibody

Cat: K108308P

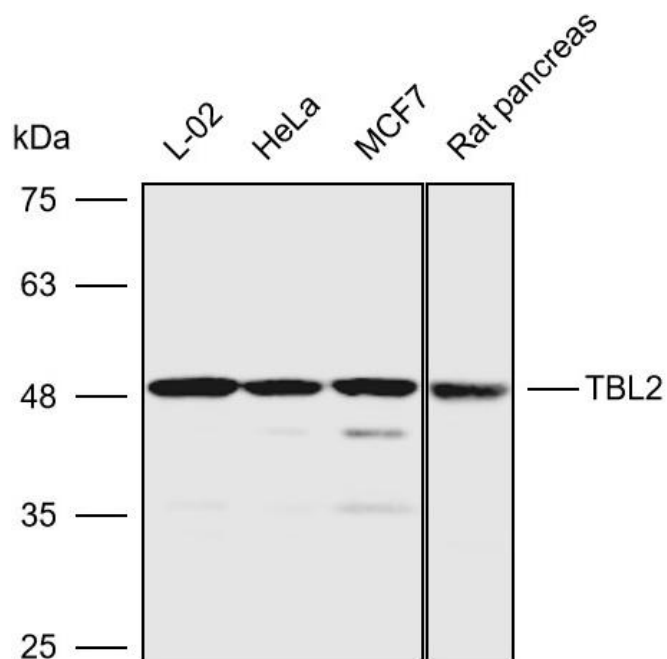
### Summary:

【Product name】 : Anti-TBL2 antibody	【Source】 : Rabbit
【Isotype】 : IgG	【Species reactivity】 : Human
【Swiss Prot】 : Q9Y4P3	【Gene ID】 : 26608
【Calculated】 : MW:49kDa	【Observed】 : MW:49kDa
【Purification】 : Affinity purification	
【Tested applications】 : WB	
【Recommended dilution】 : WB 1:1000-3000.	
【WB Positive sample】 : L-02,Hela,MCF7,Rat pancreas	
【Subcellular location】 : Cytoplasm	
【Immunogen】 : A synthetic peptide of human TBL2	
【Storage】 : Shipped at 4°C. Upon delivery aliquot and store at -20°C	

### Background:

This gene encodes a member of the beta-transducin protein family. Most proteins of the beta-transducin family are involved in regulatory functions. This protein is possibly involved in some intracellular signaling pathway. This gene is deleted in Williams-Beuren syndrome; a developmental disorder caused by deletion of multiple genes at 7q11.23.

## Verified picture



Western blot analysis with TBL2 antibody diluted at 1:2000; Lane: L-02, HeLa, MCF7, Rat pancreas