

## Anti-PPP4R1L Polyclonal Antibody

Cat: K108307P

### Summary:

---

**【Product name】** : Anti-PPP4R1L antibody

**【Source】** : Rabbit

**【Isotype】** : IgG

**【Species reactivity】** : Human

**【Swiss Prot】** : Q9P1A2

**【Gene ID】** : 55370

**【Calculated】** : MW:46/49kDa

**【Observed】** : MW:47kDa

**【Purification】** : Affinity purification

**【Tested applications】** : WB

**【Recommended dilution】** : WB 1:1000-3000.

**【WB Positive sample】** : L-02,SW480,HT29

**【Subcellular location】** :

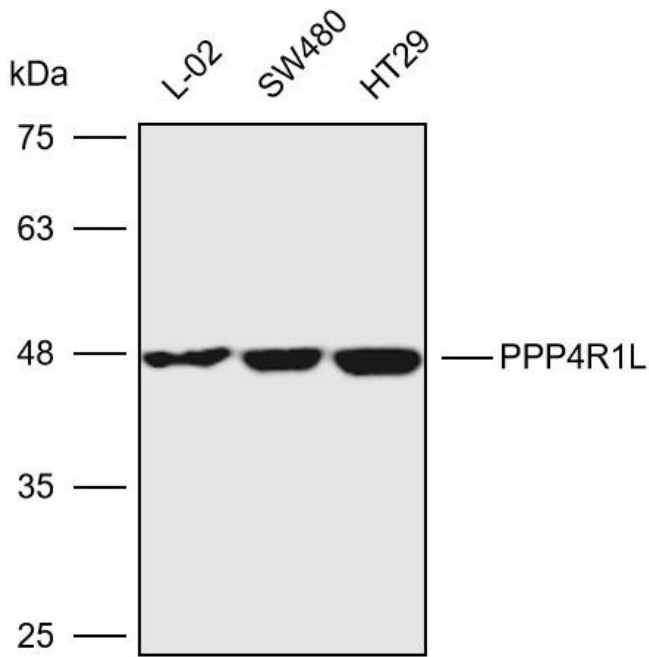
**【Immunogen】** : A synthetic peptide of human PPP4R1L

**【Storage】** : Shipped at 4°C. Upon delivery aliquot and store at -20°C

### Background:

---

## Verified picture



Western blot analysis with PPP4R1L antibody diluted at 1:2000; Lane: L-02, SW480, HT29