

Anti-PSMC3 Polyclonal Antibody

Cat: K108304P

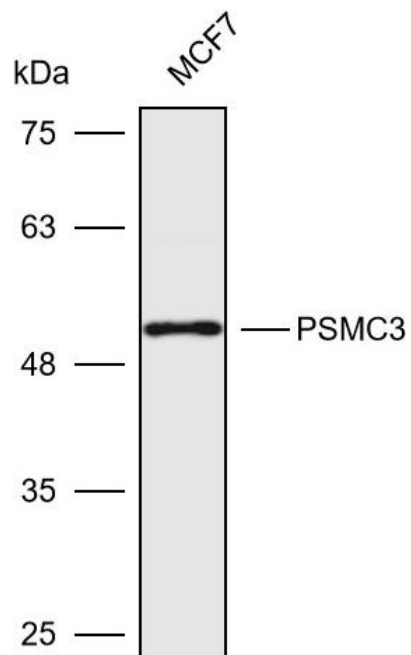
Summary:

【Product name】 : Anti-PSMC3 antibody	【Source】 : Rabbit
【Isotype】 : IgG	【Species reactivity】 : Human Mouse Rat
【Swiss Prot】 : P17980	【Gene ID】 : 5702
【Calculated】 : MW:49kDa	【Observed】 : MW:52kDa
【Purification】 : Affinity purification	
【Tested applications】 : WB IHC	
【Recommended dilution】 : WB 1:1000-3000. IHC 1:50-200.	
【WB Positive sample】 : MCF7	
【IHC Positive sample】 : Human breast cancer	
【Subcellular location】 : Cytoplasm Nucleus	
【Immunogen】 : A synthetic peptide of huma PSMC3	
【Storage】 : Shipped at 4°C. Upon delivery aliquot and store at -20°C	

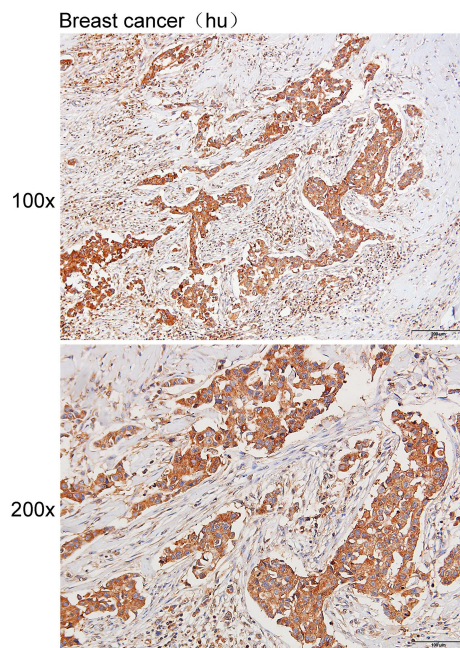
Background:

Component of the 26S proteasome; a multiprotein complex involved in the ATP-dependent degradation of ubiquitinated proteins. This complex plays a key role in the maintenance of protein homeostasis by removing misfolded or damaged proteins; which could impair cellular functions; and by removing proteins whose functions are no longer required. Therefore; the proteasome participates in numerous cellular processes; including cell cycle progression; apoptosis; or DNA damage repair. PSMC3 belongs to the heterohexameric ring of AAA (ATPases associated with diverse cellular activities) proteins that unfolds ubiquitinated target proteins that are concurrently translocated into a proteolytic chamber and degraded into peptides.

Verified picture



Western blot analysis with PSMC3 antibody
diluted at 1:2000; Lane: MCF7



Immunohistochemistry of paraffin-embedded
Human breast cancer with PSMC3 antibody
diluted at 1:100