

Anti-DRD4 Polyclonal Antibody

Cat: K108297P

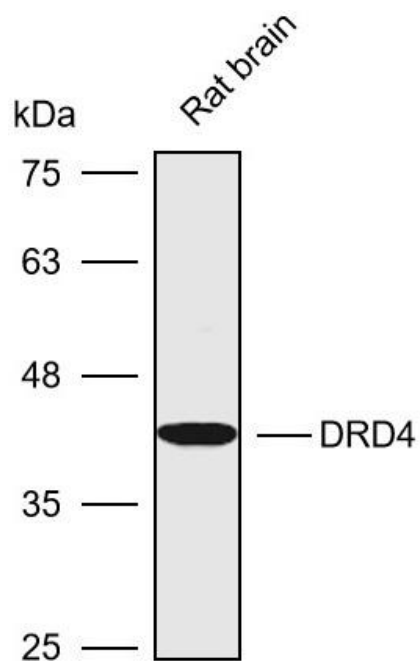
Summary:

【Product name】 : Anti-DRD4 antibody	【Source】 : Rabbit
【Isotype】 : IgG	【Species reactivity】 : Human Mouse Rat
【Swiss Prot】 : P21917	【Gene ID】 : 1815
【Calculated】 : MW:44kDa	【Observed】 : MW:42kDa
【Purification】 : Affinity purification	
【Tested applications】 : WB	
【Recommended dilution】 : WB 1:1000-3000.	
【WB Positive sample】 : Rat brain	
【Subcellular location】 : Cell membrane Cytoplasm	
【Immunogen】 : A synthetic peptide of human DRD4	
【Storage】 : Shipped at 4°C. Upon delivery aliquot and store at -20°C	

Background:

Dopamine receptor responsible for neuronal signaling in the mesolimbic system of the brain; an area of the brain that regulates emotion and complex behavior. Activated by dopamine; but also by epinephrine and norepinephrine; and by numerous synthetic agonists and drugs. Agonist binding triggers signaling via G proteins that inhibit adenylyl cyclase. Modulates the circadian rhythm of contrast sensitivity by regulating the rhythmic expression of NPAS2 in the retinal ganglion cells.

Verified picture



Western blot analysis with DRD4 antibody
diluted at 1:2000; Lane: Rat brain