

## Anti-SERGEF Polyclonal Antibody

Cat: K108295P

### Summary:

---

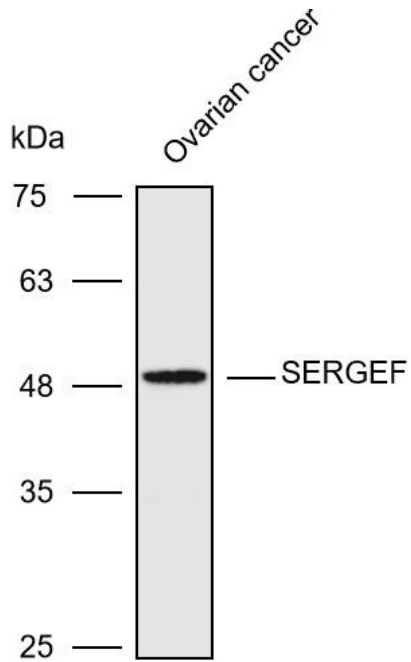
<b>【Product name】</b> : Anti-SERGEF antibody	<b>【Source】</b> : Rabbit
<b>【Isotype】</b> : IgG	<b>【Species reactivity】</b> : Human
<b>【Swiss Prot】</b> : Q9UGK8	<b>【Gene ID】</b> : 26297
<b>【Calculated】</b> : MW:30/48kDa	<b>【Observed】</b> : MW:50kDa
<b>【Purification】</b> : Affinity purification	
<b>【Tested applications】</b> : WB IHC	
<b>【Recommended dilution】</b> : WB 1:1000-3000. IHC 1:50-200.	
<b>【WB Positive sample】</b> : Human ovarian cancer	
<b>【IHC Positive sample】</b> : Human endometrial cancer	
<b>【Subcellular location】</b> : Cytoplasm Nucleus	
<b>【Immunogen】</b> : A synthetic peptide of huma SERGEF	
<b>【Storage】</b> : Shipped at 4°C. Upon delivery aliquot and store at -20°C	

### Background:

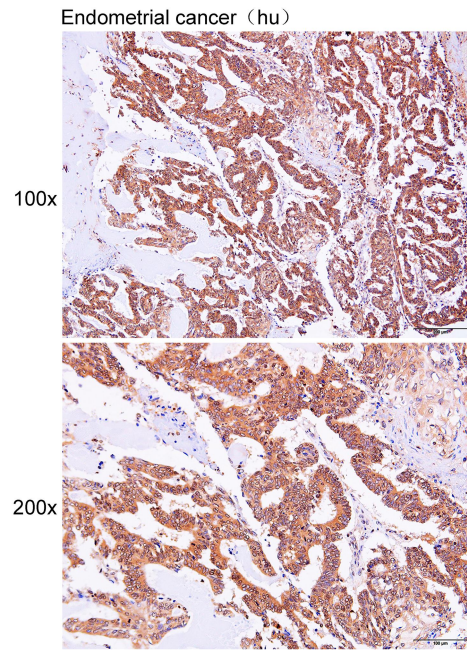
---

Probable guanine nucleotide exchange factor (GEF); which may be involved in the secretion process.

## Verified picture



Western blot analysis with SERGEF antibody diluted at 1:2000; Lane: Human ovarian cancer



Immunohistochemistry of paraffin-embedded Human endometrial cancer with SERGEF antibody diluted at 1:100