

Anti-PHKG1 Polyclonal Antibody

Cat: K108289P

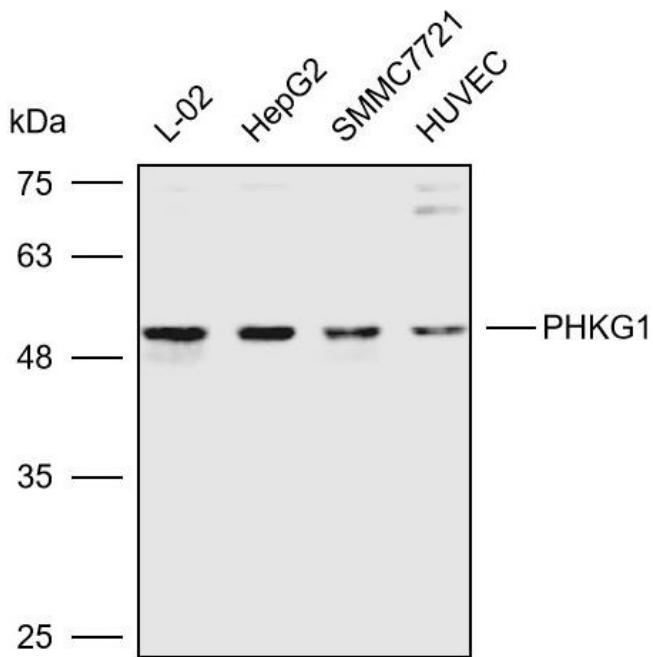
Summary:

【Product name】 : Anti-PHKG1 antibody	【Source】 : Rabbit
【Isotype】 : IgG	【Species reactivity】 : Human
【Swiss Prot】 : Q16816	【Gene ID】 : 5260
【Calculated】 : MW:45/49kDa	【Observed】 : MW:52kDa
【Purification】 : Affinity purification	
【Tested applications】 : WB	
【Recommended dilution】 : WB 1:1000-3000.	
【WB Positive sample】 : L-02,HepG2,SMMC7721,HUVEC	
【Subcellular location】 : Cytoplasm	
【Immunogen】 : A synthetic peptide of human PHKG1	
【Storage】 : Shipped at 4°C. Upon delivery aliquot and store at -20°C	

Background:

Catalytic subunit of the phosphorylase b kinase (PHK); which mediates the neural and hormonal regulation of glycogen breakdown (glycogenolysis) by phosphorylating and thereby activating glycogen phosphorylase. In vitro; phosphorylates PYGM; TNNI3; MAPT/TAU; GAP43 and NRGN/RC3 (By similarity).

Verified picture



Western blot analysis with PHKG1 antibody diluted at 1:2000; Lane: L-02, HepG2, SMMC7721, HUVEC