

Anti-SSTR2 Polyclonal Antibody

Cat: K108242P

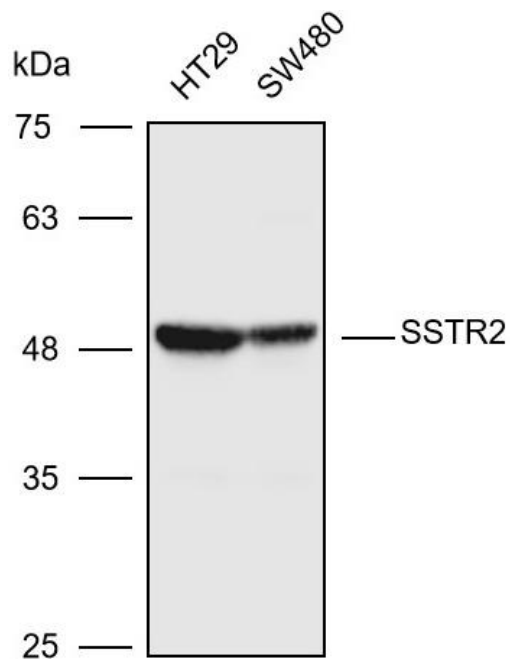
Summary:

【Product name】 : Anti-SSTR2 antibody	【Source】 : Rabbit
【Isotype】 : IgG	【Species reactivity】 : Human Mouse Rat
【Swiss Prot】 : P30874	【Gene ID】 : 6752
【Calculated】 : MW:40/41kDa	【Observed】 : MW:49kDa
【Purification】 : Affinity purification	
【Tested applications】 : WB	
【Recommended dilution】 : WB 1:1000-3000.	
【WB Positive sample】 : HT29,SW480	
【Subcellular location】 : Cell membrane Secreted	
【Immunogen】 : A synthetic peptide of human SSTR2	
【Storage】 : Shipped at 4°C. Upon delivery aliquot and store at -20°C	

Background:

Somatostatin acts at many sites to inhibit the release of many hormones and other secretory proteins. The biologic effects of somatostatin are probably mediated by a family of G protein-coupled receptors that are expressed in a tissue-specific manner. SSTR2 is a member of the superfamily of receptors having seven transmembrane segments and is expressed in highest levels in cerebrum and kidney.

Verified picture



Western blot analysis with SSTR2 antibody diluted
at 1:2000; Lane: HT29, SW480