

Anti-ADI1 Ponoclonal Antibody

Cat: K108160P

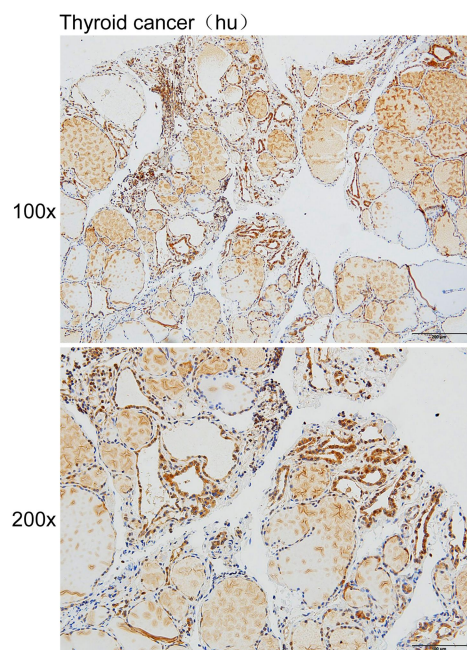
Summary:

| | |
|--|--|
| 【Product name】 : Anti-ADI1 antibody | 【Source】 : Rabbit |
| 【Isotype】 : IgG | 【Species reactivity】 : Human Mouse Rat |
| 【Swiss Prot】 : Q9BV57 | 【Gene ID】 : 55256 |
| 【Calculated】 : MW:21kDa | |
| 【Purification】 : Affinity purification | |
| 【Tested applications】 : IHC | |
| 【Recommended dilution】 : IHC 1:50-200. | |
| 【IHC Positive sample】 : Human thyroid cancer | |
| 【Subcellular location】 : Cytoplasm Nucleus | |
| 【Immunogen】 : Recombinant protein of human ADI1 | |
| 【Storage】 : Shipped at 4°C. Upon delivery aliquot and store at -20°C | |

Background:

This gene encodes an enzyme that belongs to the aci-reductone dioxygenase family of metal-binding enzymes, which are involved in methionine salvage. This enzyme may regulate mRNA processing in the nucleus, and may carry out different functions depending on its localization. Related pseudogenes have been defined on chromosomes 8 and 20. Alternative splicing results in multiple transcript variants encoding different isoforms.

Verified picture



Immunohistochemistry of paraffin-embedded
Human thyroid cancer with AD11 antibody
diluted at 1:100