

Anti-LCMT2 Polyclonal Antibody

Cat: K108158P

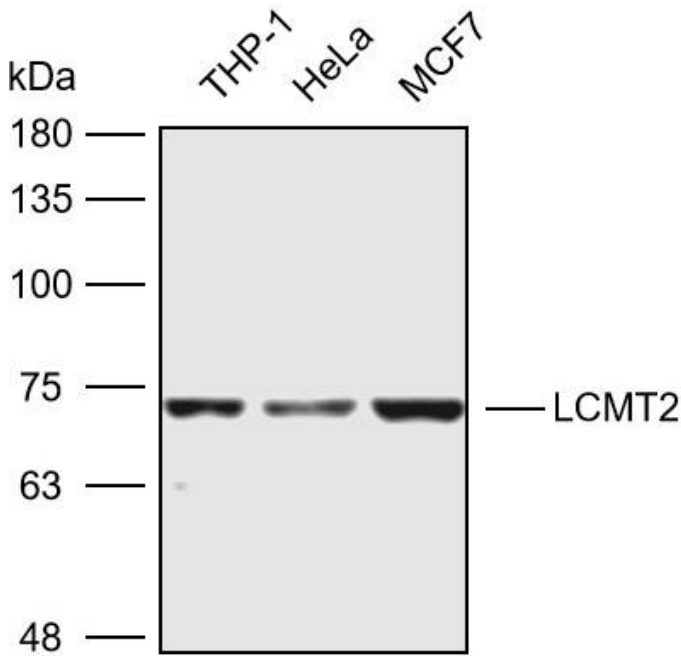
Summary:

【Product name】 : Anti-LCMT2 antibody	【Source】 : Rabbit
【Isotype】 : IgG	【Species reactivity】 : Human Mouse Rat
【Swiss Prot】 : O60294	【Gene ID】 : 9836
【Calculated】 : MW:76kDa	【Observed】 : MW:70kDa
【Purification】 : Affinity purification	
【Tested applications】 : WB IHC	
【Recommended dilution】 : WB 1:2000-5000. IHC 1:50-200.	
【WB Positive sample】 : THP-1,Hela,MCF7	
【IHC Positive sample】 : Human breast cancer	
【Subcellular location】 : Cytoplasm	
【Immunogen】 : Recombinant protein of human LCMT2	
【Storage】 : Shipped at 4°C. Upon delivery aliquot and store at -20°C	

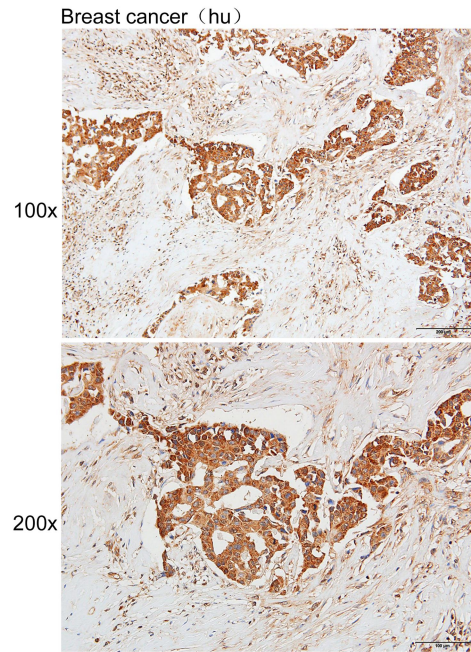
Background:

The protein encoded by this intronless gene belongs to the highly variable methyltransferase superfamily. This gene is the inferred homolog of the *Saccharomyces cerevisiae* carboxymethyltransferase gene PPM2 that is essential for the synthesis of the hypermodified guanosine Wybutosine (yW).

Verified picture



Western blot analysis with LCMT2 antibody diluted at 1:4000; Lane: THP-1, HeLa, MCF7



Immunohistochemistry of paraffin-embedded Human breast cancer with LCMT2 antibody diluted at 1:80