

## Anti-OR4A15 Polyclonal Antibody

Cat: K108056P

### Summary:

---

**【Product name】** : Anti-OR4A15 antibody

**【Source】** : Rabbit

**【Isotype】** : IgG

**【Species reactivity】** : Human

**【Swiss Prot】** : Q8NGL6

**【Gene ID】** : 81328

**【Calculated】** : MW:39kDa

**【Observed】** : MW:45kDa

**【Purification】** : Affinity purification

**【Tested applications】** : WB

**【Recommended dilution】** : WB 1:8000-12000.

**【WB Positive sample】** : HT29

**【Subcellular location】** : Cell membrane

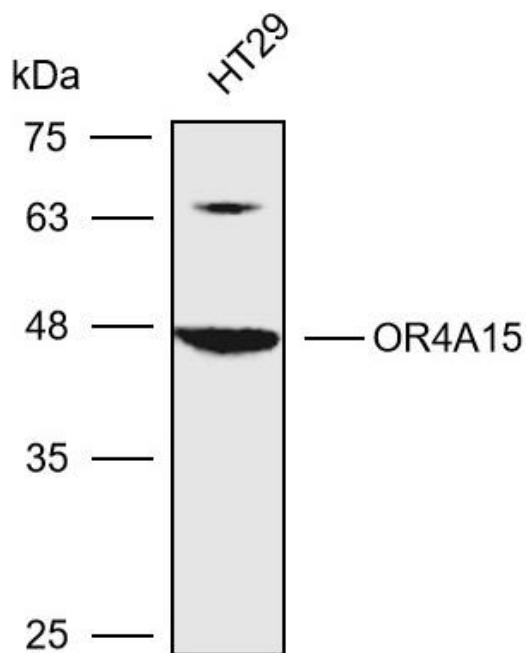
**【Immunogen】** : A synthetic peptide of Human OR4A15

**【Storage】** : Shipped at 4°C. Upon delivery aliquot and store at -20°C

### Background:

---

## Verified picture



Western blot analysis with OR4A15 antibody  
diluted at 1:10000; Lane: HT29