

## Anti-STK26 Polyclonal Antibody

Cat: K108015P

### Summary:

---

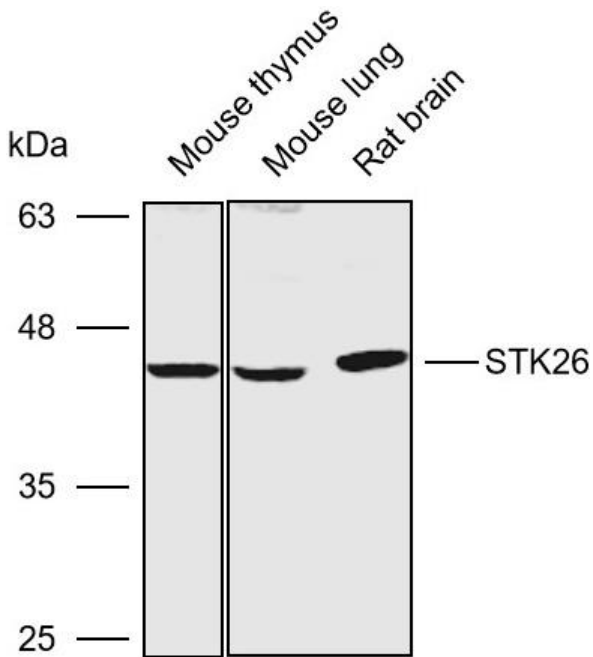
<b>【Product name】</b> : Anti-STK26 antibody	<b>【Source】</b> : Rabbit
<b>【Isotype】</b> : IgG	<b>【Species reactivity】</b> : Human Mouse Rat
<b>【Swiss Prot】</b> : Q9P289	<b>【Gene ID】</b> : 51765
<b>【Calculated】</b> : MW:37/39/47kDa	<b>【Observed】</b> : MW:45kDa
<b>【Purification】</b> : Affinity purification	
<b>【Tested applications】</b> : WB IHC	
<b>【Recommended dilution】</b> : WB 1:1000-3000. IHC 1:50-200.	
<b>【WB Positive sample】</b> : A549,Hela	
<b>【IHC Positive sample】</b> : Human colorectal cancer	
<b>【Subcellular location】</b> : Cytoplasm Cell membrane	
<b>【Immunogen】</b> : Recombinant protein of human STK26	
<b>【Storage】</b> : Shipped at 4°C. Upon delivery aliquot and store at -20°C	

### Background:

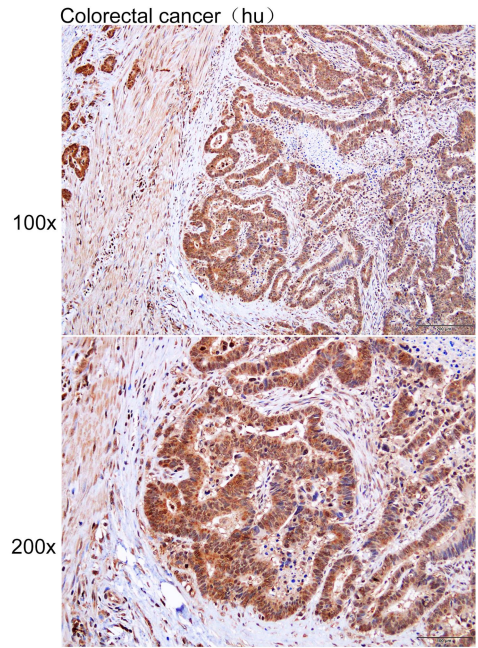
---

The product of this gene is a member of the GCK group III family of kinases, which are a subset of the Ste20-like kinases. The encoded protein contains an amino-terminal kinase domain, and a carboxy-terminal regulatory domain that mediates homodimerization. The protein kinase localizes to the Golgi apparatus and is specifically activated by binding to the Golgi matrix protein GM130. It is also cleaved by caspase-3 in vitro, and may function in the apoptotic pathway. Several alternatively spliced transcript variants of this gene have been described, but the full-length nature of some of these variants has not been determined.

## Verified picture



Western blot analysis with STK26 antibody diluted at 1:2000; Lane: Mouse thymus, Mouse lung, Rat brain



Immunohistochemistry of paraffin-embedded Human colorectal cancer with STK26 antibody diluted at 1:100