

## Anti-FCGR2C Polyclonal Antibody

Cat: K107969P

### Summary:

---

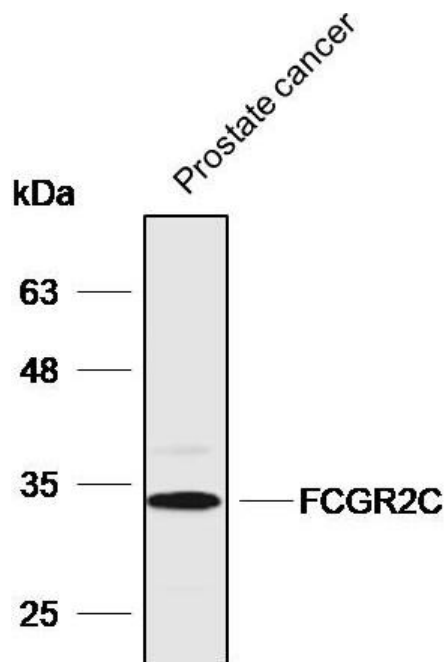
<b>【Product name】</b> : Anti-FCGR2C antibody	<b>【Source】</b> : Rabbit
<b>【Isotype】</b> : IgG	<b>【Species reactivity】</b> : Human
<b>【Swiss Prot】</b> : P31995	<b>【Gene ID】</b> : 9103
<b>【Calculated】</b> : MW:26/30/35kDa	<b>【Observed】</b> : MW:33kDa
<b>【Purification】</b> : Affinity purification	
<b>【Tested applications】</b> : WB	
<b>【Recommended dilution】</b> : WB 1:1000-3000.	
<b>【WB Positive sample】</b> : Human prostate cancer	
<b>【Subcellular location】</b> : Cell membrane	
<b>【Immunogen】</b> : A synthetic peptide of human FCGR2C	
<b>【Storage】</b> : Shipped at 4°C. Upon delivery aliquot and store at -20°C	

### Background:

---

Receptor for the Fc region of complexed immunoglobulins gamma. Low affinity receptor. Involved in a variety of effector and regulatory functions such as phagocytosis of immune complexes and modulation of antibody production by B-cells.

## Verified picture



Western blot analysis with FCGR2C antibody diluted at 1:2000; Lane: Human prostate cancer